

TELEPHONE SETS—569NB

IDENTIFICATION — INTERNAL CONNECTIONS

1.00 INTRODUCTION

This section covers identification and internal connections of the 569NB telephone set.

2.00 GENERAL

The 569NB telephone set is a common battery, desk-type dial, illuminated, 6-button key telephone set designed for use with various types of data sets. Its physical appearance is identical to the 565HD-type telephone set.

3.00 IDENTIFICATION

3.01 The set consists of a C4A ringer, a 425E network, a G3AR hand set, a 7C dial, a 569T key, a D50J mounting cord, and an exclusion-type switch.

3.02 The set will be manufactured in light gray color only.

3.03 The set end of the D50J cord has 30 free spade-tipped conductors. The remaining 20 conductors are permanently attached to two wafer strips. The plug end is equipped with a KS-16689, List 1 plug, which mates with an A25B connector cable. Cord length is 5 feet 6 inches.

3.04 The 589T key used in the set has six buttons with the following functions:

DATA HOLD A nonlocking key, used to shift from the talk to the data mode of operation on the data line, and as a hold key for central office or PBX lines connected to key 4, 5, or 6.

TALK Connects the telephone set to the line used for data transmission.

TEST Nonlocking key used to test the data set under the direction of the data test center.

1ST PICKUP KEY Used for pickup of an additional central office or PBX line. Can be used in 1A1, 1A, or 6A key telephone systems.

2ND PICKUP KEY Same as 1st pickup key, except may also be converted to a signal key if desired.

AUTO ANS OR 3RD PICKUP KEY Used either as an automatic answer key, or the same as pickup key 2, depending on wiring option used.

3.05 The 425E network is electrically identical to a 425B network, except the "C" terminal is a screw-type instead of a solder-type terminal.

4.00 OPERATION

The operation of the set keys are the same as for conventional 4- or 6-key telephone sets. Operating instructions for keys having dual functions are included in the practice covering the data set used with the 569NB telephone set.

5.00 INSTALLATION

5.01 The 569NB telephone set shall be installed in conformance with existing practices covering installation of telephone sets.

5.02 The set is factory-wired for use with data sets. If the set is to be connected to 1A1 or 1A key telephone systems with a holding feature, wiring changes inside the set, and a 229B key telephone unit, are required. Use of a 229B unit enables the DATA HOLD key to be used as a regular hold key with lines associated with the key telephone system and as a data key when shifting

from talk to data on the line used for data transmission.

6.00 CONNECTIONS

Fig. 1 shows internal connections of the 569NB telephone set. Connections between the telephone set and the data set are specified in the Bell System Practice covering the data set.

7.00 MAINTENANCE

Maintenance information contained in existing Practices for 540- and 560-type telephone sets applies to the 569NB telephone set.

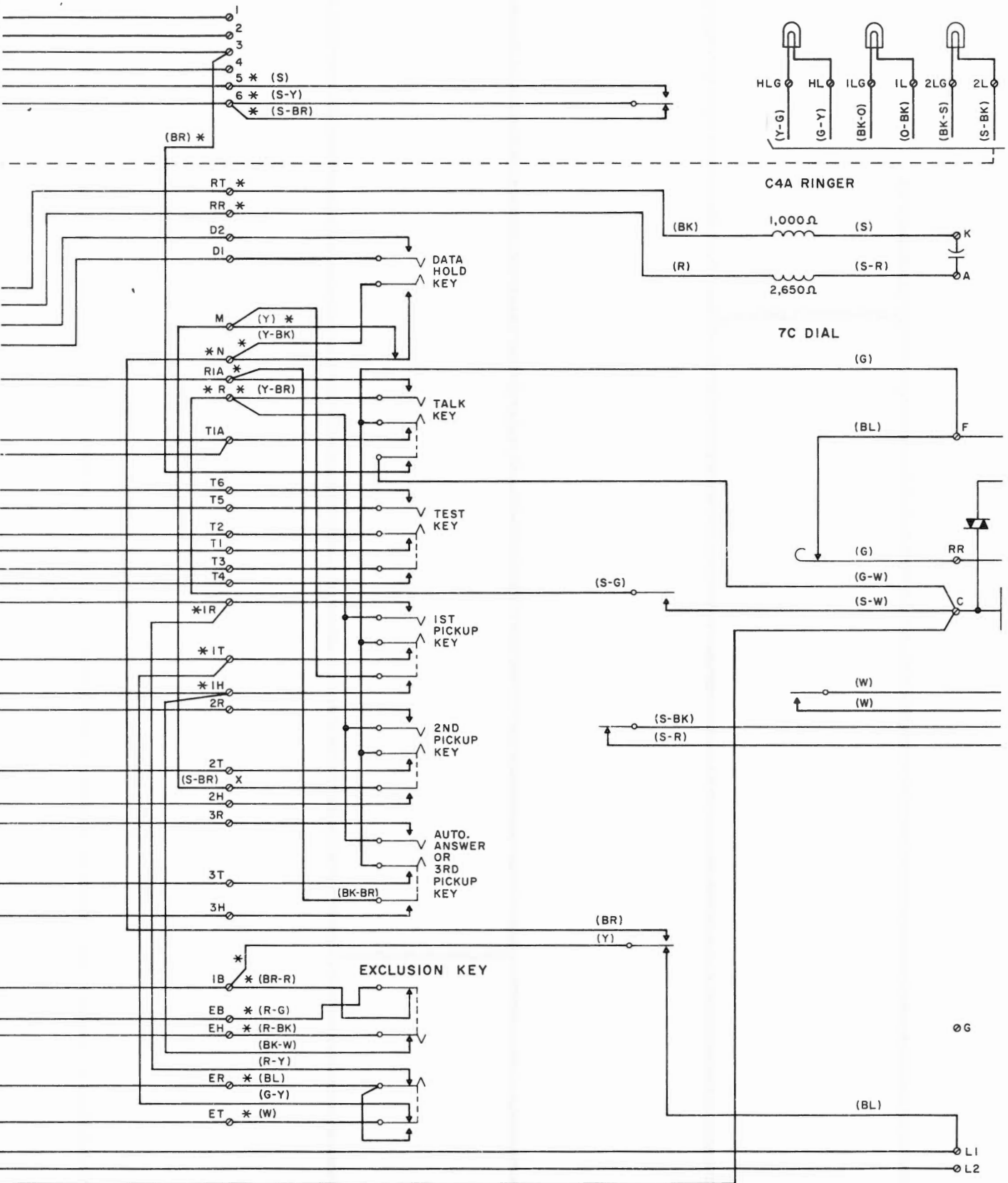
D50J CORD

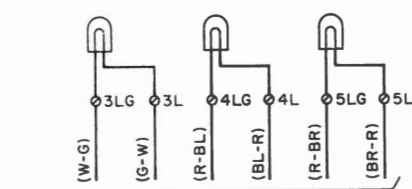
1	(BL-W)	(Y-O)
26	(W-BL)	(S-V)
2	(O-W)	(V-G)
27	(W-O)	(BR-Y)
3	(G-W)	(BL-Y)
28	(W-G)	(Y-BL)
4	(BR-W)	(Y-G)
29	(W-BR)	(G-Y)
5	(S-W)	(BK-O)
30	(W-S)	(O-BK)
6	(BL-R)	(BK-S)
31	(R-BL)	(S-BK)
7	(O-R)	(W-G)
32	(R-O)	(G-W)
8	(G-R)	(R-BL)
33	(R-G)	(BL-R)
9	(BR-R)	(R-BR)
34	(R-BR)	(Y-S)
10	(S-R)	(S-Y)
35	(R-S)	(BR-V)
11	(BL-BK)	(V-BR)
36	(BK-BL)	(S-R)
12	(O-BK)	
37	(BK-O)	
13	(G-BK)	(R-S)
38	(BK-G)	(G-V)
14	(BR-BK)	
39	(BK-BR)	(BK-BR)
40	(S-BK)	(BR-BK)
41	(BK-S)	(BK-BL)
16	(BL-Y)	(BL-BK)
42	(Y-BL)	(G-BK)
17	(O-Y)	(BK-G)
43	(Y-O)	(BL-W)
18	(G-Y)	
44	(Y-G)	
19	(BR-Y)	
45	(Y-BR)	(W-BL)
20	(S-Y)	
46	(Y-S)	(W-O)
21	(BL-V)	(BR-W)
47	(V-BL)	(S-W) †
22	(O-V)	(W-BR)
48	(V-O)	
23	(G-V)	(W-S)
49	(V-G)	(O-R)
24	(BR-V)	
50	(V-BR)	(G-R) †
25	(S-V)	(R-O)
26	(V-S)	(R-G)
		(O-W)
		(O-V)
		(V-O)
		(BL-V)
		(V-BL)
		(O-Y)
		(Y-BR)
		(V-S)

TERMINALS IN SET

589T KEY

SWITCHHOOK





425E NETWORK

G3AR HAND SET

* Spade-tipped lead.

† Tape and Store.

FOR KEY TELEPHONE SYSTEMS

Move: O-Y mounting cord off L1, on D2.

G-W key lead off C, on 4. BR key lead off 3, on 2.

Disconnect: BR-V mounting cord, tape and store.

1A1 TO 1A CONVERSION

Switchhook Lead			Key Lead		
Color	Off	On	Color	Off	On
Y	1B	4	Y	M	R
BR	N	L2	Y-BK	N	M
S-G	R	N	Y-BR	R	N

PICKUP TO SIGNAL KEY CONVERSION

Key No.	Cord Color	From Pickup	To Individual Signal
5	S-BR	M	4
6	BK-BR	R1A	4

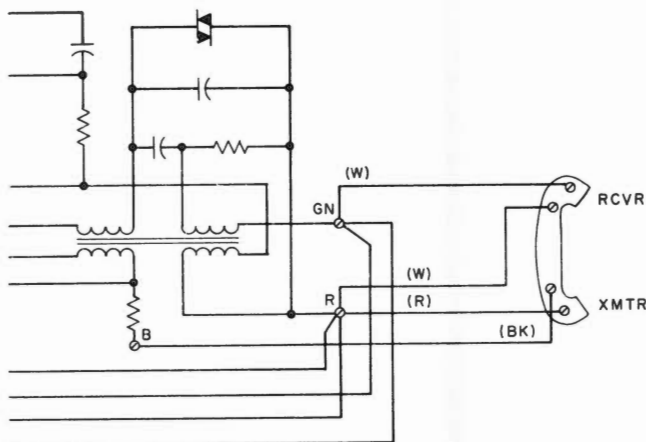


Fig. 1 — 569 NB Telephone Set
Internal Connections