

# SERVICE

## 2211-TYPE HAND TELEPHONE SETS

### 1. GENERAL

- Add 35Y3A dial to Fig. 1 and 3

#### 1.01 Reissued to:

- Revise connections in Table A and Fig. 3

♦TABLE A♦

### CONNECTIONS—USING 685A SUBSCRIBER SET

PLEASE NOTE AND RETURN

BARNETT, R. G. 3  
GHEEN, R. F. 0  
KINSLEY, D. 0  
KLASS, R. 0  
MOORE, H. T. 0  
MUELLER, A. 0  
MURPHY, E. 0  
SHARFF, H. C. 0  
THOMAS, P. 0

WIRE OR LEAD	COLOR	BRIDGED	RING PARTY	TIP PARTY NO IDENT GROUND
Local Wiring	BR-W	GN *	GN *	GN *
	W-BR	R *	R *	R *
	S-W	B * 2‡	B * 2‡	B * 2‡
	BL-W	L2	L2	L2
	W-BL	L2 *	L2 *	L2 *
	G-W	2 C *‡	2 C *‡	2 C *‡
	W-G	RR *	RR *	RR *
	W-O ‡	K	K	K
	O-W ‡	G	G	G
Ringer Leads	R	L2	L2	L1
	BK	L1	G	G
	S	K *	K *	K *
	S-R	1	1	1
Straps — Net. to Term. Strip	BR†	2-C * Insulate and Store ‡	2-C *	2-C *
	BL	L1-L2 *	L1-L2 *	L1-L2 *
	BR-Y	1-A *	1-A *	1-A *
Line Wires	Ring	R or BL-W	L2	L2
	Tip	G or W-BL	L1	L1
	Grd or A1	Y or O-W	G	G
	A	W-O	K	K

\* Network terminal undesignated terminals are on subset terminal strip.

† S-BR strap used on earlier production subscriber sets.

‡ 2211P only; refer to Fig. 3.

TABLE B

## 840359400 POLARITY GUARD CONNECTIONS

WIRE OR LEAD	COLOR	REMOVE FROM	CONNECT TO	CONNECT TO
		HANDSET MTG	POLARITY GUARD	HANDSET MTG
Inside Wiring	G-W	BK	V	
Dial Strap	O-BK	BK	V	
Dial	BK	4*	T	
Polarity Guard	S			BK
	G			4*
	W		V	

\* Terminal BL on 2211L.

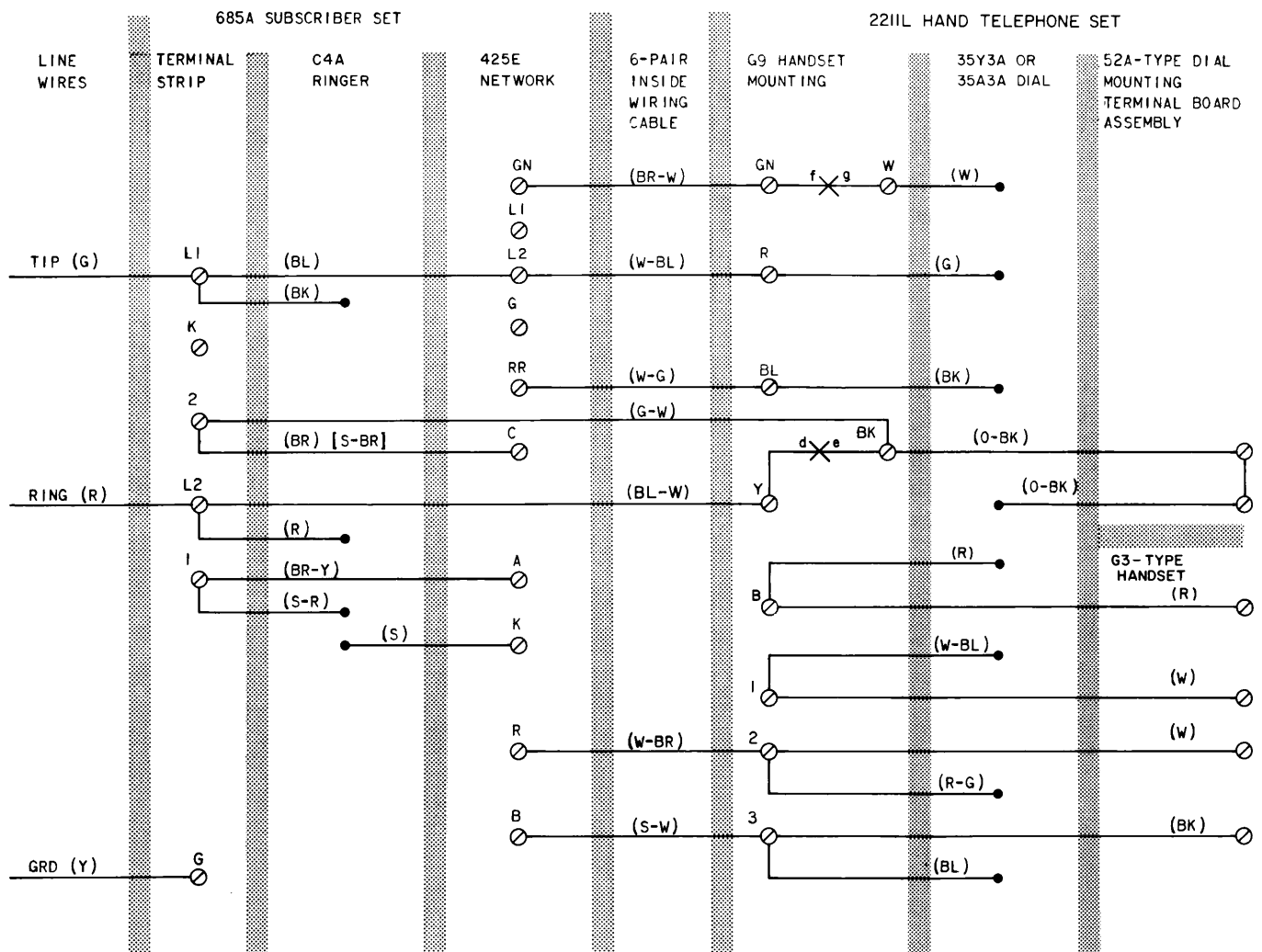
TABLE C

## CONNECTIONS — USING 686A SUBSCRIBER SET

WIRE OR LEAD	COLOR	NEGATIVE (—) PARTIES		POSITIVE (+) PARTIES	
		RING STATION 1 AND 5	TIP STATION 2 AND 6	RING STATION 3 AND 7	TIP STATION 4 AND 8
Local Wiring	BR-W	GN*	GN*	GN*	GN*
	W-BR	R*	R*	R*	R*
	S-W	B*	B*	B*	B*
	BL-W	L2	L2	L2	L2
	G-W	2	2	2	2
	W-BL	L2*	L2*	L2*	L2*
	W-G	RR*	RR*	RR*	RR*
Straps — Net. to Term. Strip	BR†	2-C*	2-C*	2-C*	2-C*
	BR-Y	1-A*	1-A*	1-A*	1-A*
	BL	L1-L2*	L1-L2*	L1-L2*	L1-L2*
Ringer Lead	S	A*	A*	A*	A*
	BK	G	G	L2	L1
	R	G	G	L2	L1
	S-R	K*	K*	K*	K*
426A Tube Lead (3-Element)	BK	K*	K*	K*	K*
	Y	L2	L1	G	G
	R	G	G	L2	L1
Inside Wire from Protector or Line	R	L2	L2	L2	L2
	G	L1	L1	L1	L1
	Y	G	G	G	G

\* Network terminal.

† S-BR strap used on earlier production subscriber sets.



## NOTES:

1. ON EARLIER SETS (BL) STRAP MUST BE MOVED FROM TERMINAL RR OR F TO L2 OF NETWORK.
2. MOVE (BR)[S-BR] STRAP FROM L2 TO 2 OF TERMINAL STRIP. ON EARLIER SETS (BR) [S-BR] STRAP IS ON TERMINAL 2.
3. CONNECTIONS SHOWN ARE FOR BRIDGED SERVICE REFER TO TABLE A FOR ALL SERVICES PROVIDED.
4. TO SILENCE RINGER PERMANENTLY CONNECT (R) AND (BK) RINGER LEADS TO K OF THE TERMINAL STRIP.
5. LINE SWITCH CONTACTS d AND e MAKE FIRST, CONTACTS f AND g MAKE LAST.

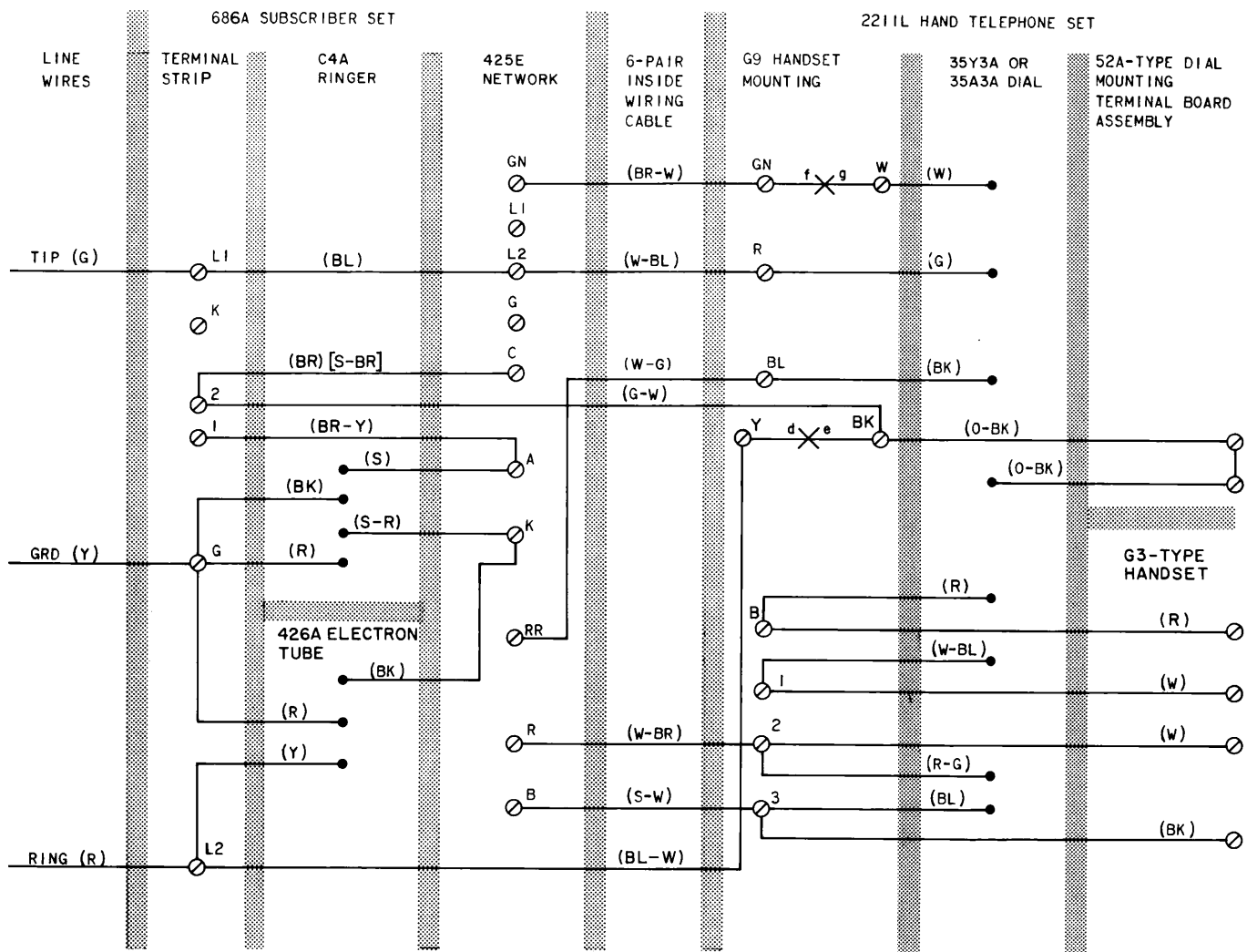
( ) CURRENT COLOR CODE

[ ] MD COLOR CODE

TPA 542675

◆ Fig. 1—2211L Hand Telephone Set Connections Used With Modified 685A Subscriber Set, Bridged Ringing ◆

# SECTION 502-321-401



## NOTES:

1. ON EARLIER SETS (BL) STRAP MUST BE MOVED FROM RR OR F TO L2 OF NETWORK.
2. MOVE (BR) [S-BR] STRAP FROM L2 TO 2 OF TERMINAL STRIP. ON EARLIER SETS (BR) [S-BR] IS ON TERMINAL 2.
3. CONNECTIONS SHOWN ARE FOR (-) RING PARTY REFER TO TABLE C FOR ALL SERVICES PROVIDED.
4. TO SILENCE RINGER PERMANENTLY CONNECT (R) AND (BK) RINGER LEADS TO K OF THE TERMINAL STRIP.
5. LINE SWITCH CONTACTS d AND e MAKE FIRST, CONTACTS f AND g MAKE LAST.

6. FOR TIP PARTY SERVICE MOVE (Y) TUBE LEAD FROM L2 TO L1 OF TERMINAL STRIP.
  7. FOR ADDITIONAL INFORMATION CONCERNING INDUCTIVE INTERFERENCE REFER TO SECTION ON INDUCTIVE NOISE.
- ( ) CURRENT COLOR CODE  
[ ] MD COLOR CODE

TPA 542676

◆ Fig. 2—2211L Hand Telephone Set Connections Used With Modified 686A Subscriber Set (—) Ring Party ◆



5. LINE SWITCH SEQUENCE,  
HANDSET REMOVED:

bc MAKES  
ab BREAKS  
de MAKES  
fg MAKES

\* INSULATE AND STORE.  
( ) CURRENT COLOR CODE.  
[ ] MD COLOR CODE

TPA 542677

**Page 5**  
**5 Pages**

