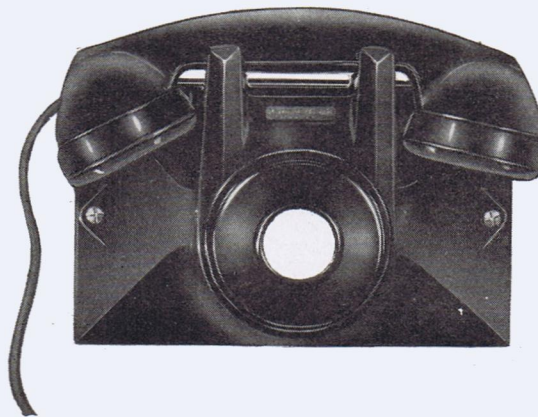


## UNIPHONES



No. 1 Type Uniphone equipped for dial service



No. 2 Type Uniphone equipped for manual service

The Uniphone is a self-contained telephone set embodying all of the most up-to-date features known to the telephone art. It has a pleasing appearance and the well-balanced lines render it suitable for use in any surroundings. It is available in both wall and table types for use in manual or dial common battery systems.

When required for magneto service, see Stands, Uniphone, pages 94 and 95.

The Hand Set and Hand Set mountings are made of bakelite and are available in black, or grained walnut finish.

The Uniphone will require the minimum of maintenance and such as may be required is greatly facilitated by the ease with which all apparatus may be inspected or removed. A screwdriver is the only tool required for the removal of the cover or any of the associated parts.

The overall dimensions of the Table and Wall Type Uniphones, including Hand Set are approximately as follows:—

No. 1 Table Type—8¾" long, 5½" wide, 5½" high.

No. 2 Wall Type—8¾" long, 6½" wide, 5½" high.

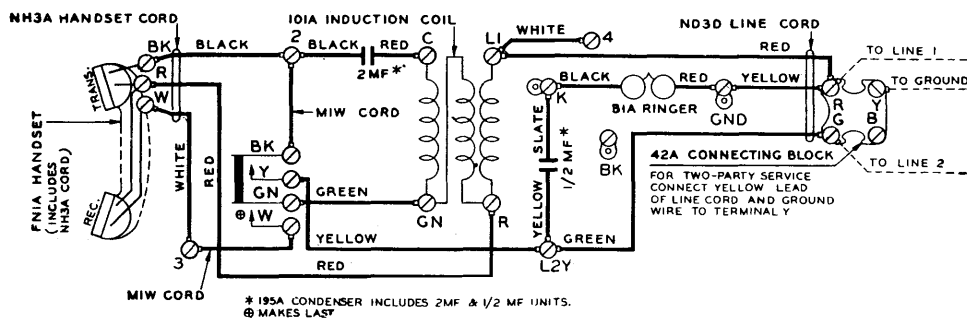
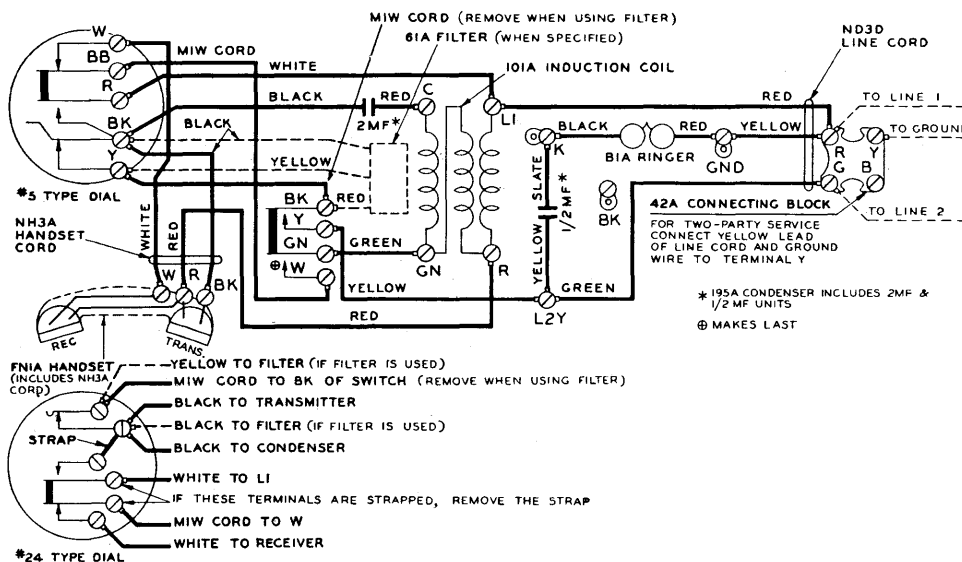
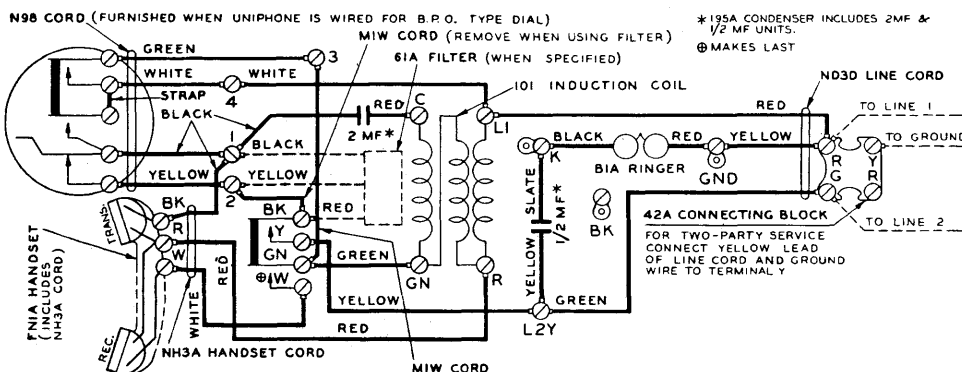
Packed 8 per carton weighing:

No. 1 Type (manual service).....	41 lbs.
No. 1 Type (dial service).....	42 lbs.
No. 2 Type (manual service).....	39 lbs.
No. 2 Type (dial service).....	40 lbs.

Orders for Uniphone should state whether table or wall type, black or burl walnut colour and whether for dial or manual service.

## UNIPHONES

## Wiring Diagrams for No. 1 Type Uniphones

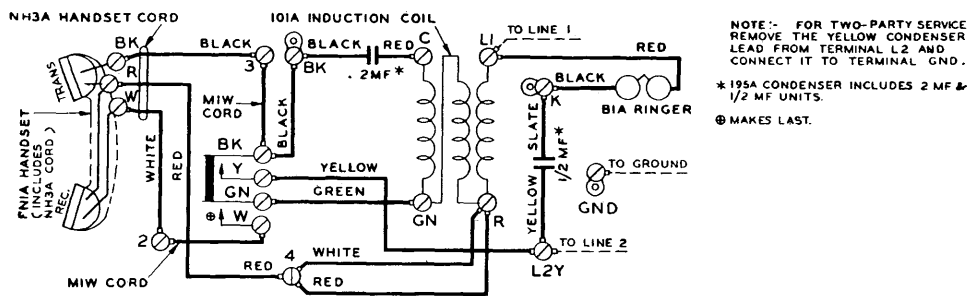
Wiring Diagram for No. 1 Type Uniphone for **Manual Service**Wiring Diagram for No. 1 Type Uniphone Equipped with **No. 5 Type or No. 24 Type Dial** with No. 29AK Spring AssemblyWiring Diagram for No. 1 Type Uniphone Equipped with a **British Post Office Type Dial**

Extension bells improve both service and revenue

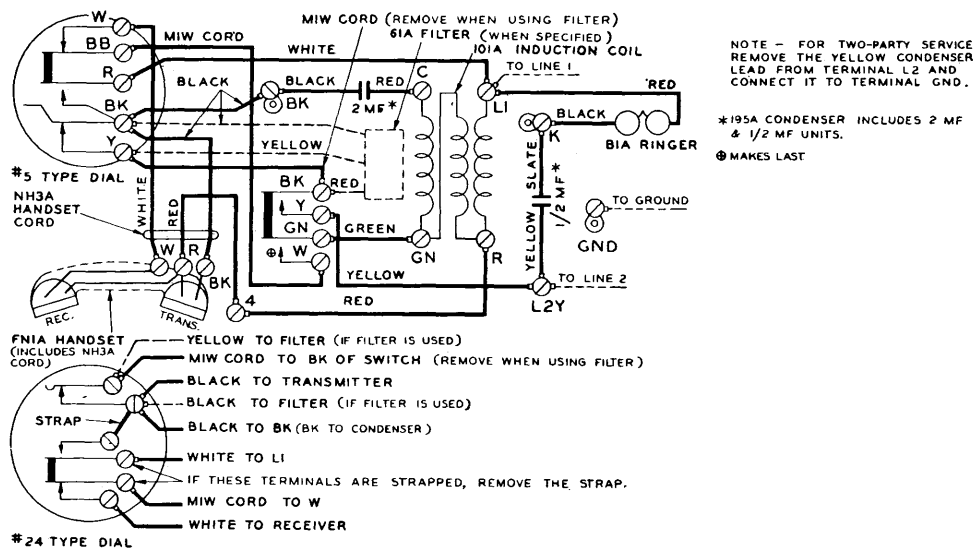


# UNIPHONES

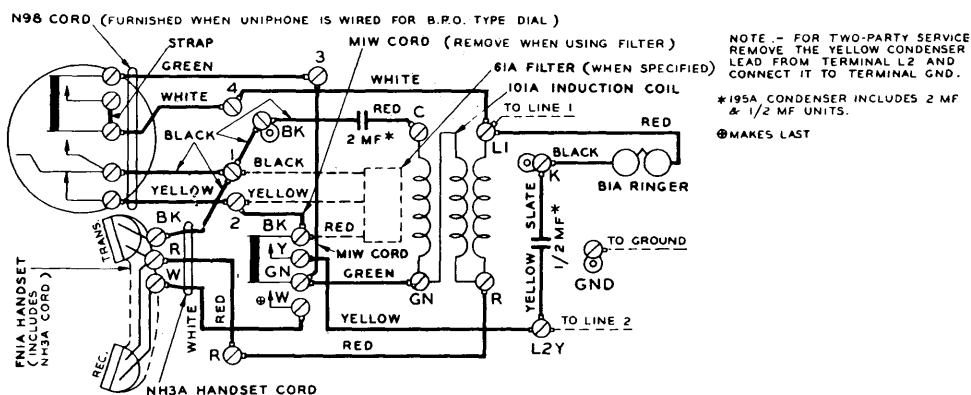
## Wiring Diagrams for No. 2 Type Uniphones



Wiring Diagram for No. 2 Type Uniphone for **Manual Service**



Wiring Diagram for No. 2 Type Uniphone Equipped with **No. 5 Type or No. 24 Type Dial** with No. 29AK Spring Assembly

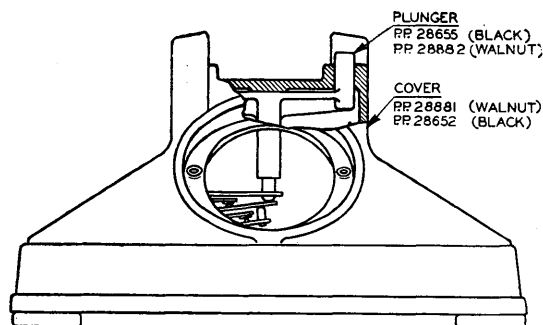


Wiring Diagram for No. 2 Type Uniphone Equipped with a **British Post Office Type Dial**

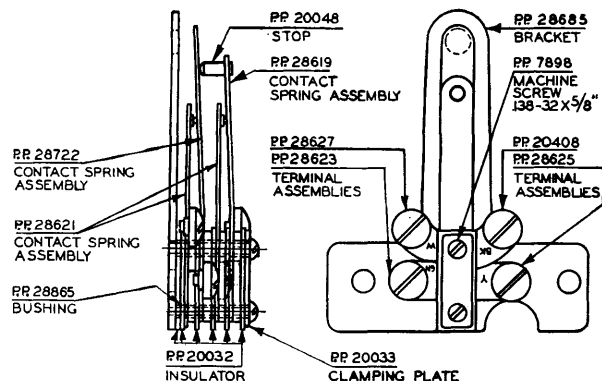
## UNIPHONES

## Replacement Parts

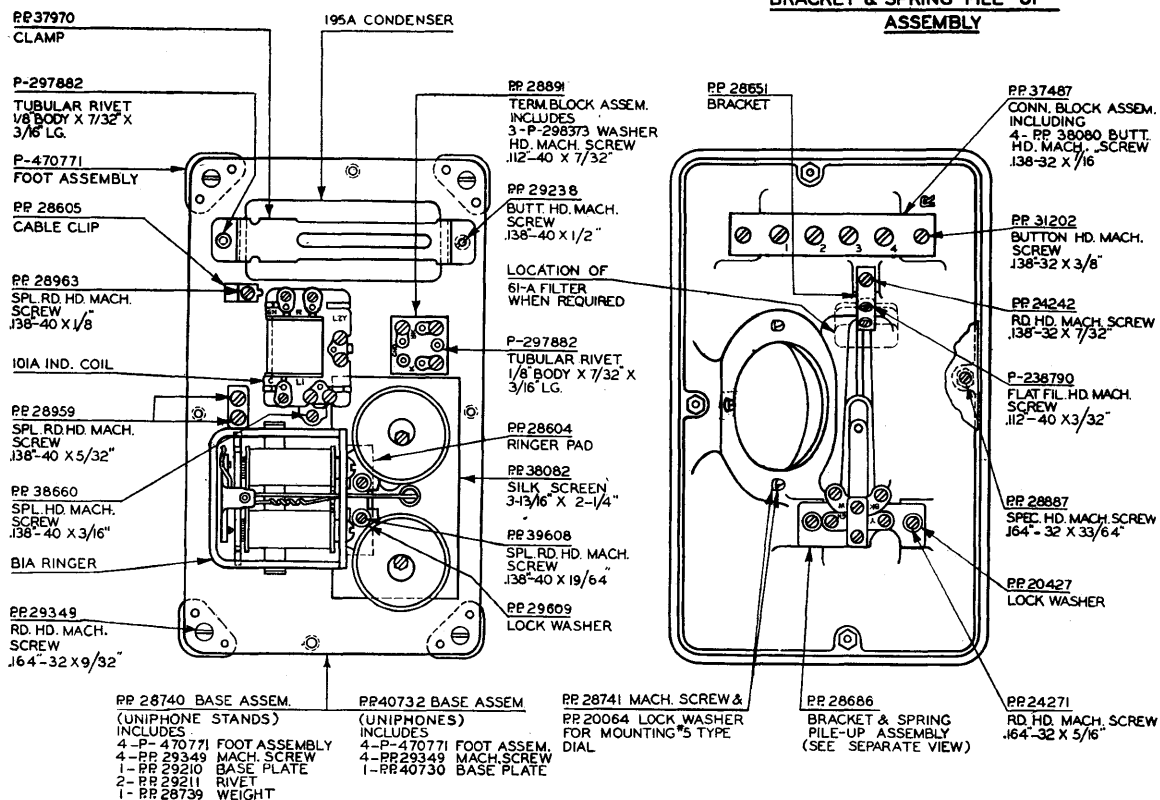
No. 1 Type Uniphone and Nos. 5 &amp; 7 Uniphone Stands



FRONT VIEW



BRACKET &amp; SPRING PILE-UP ASSEMBLY

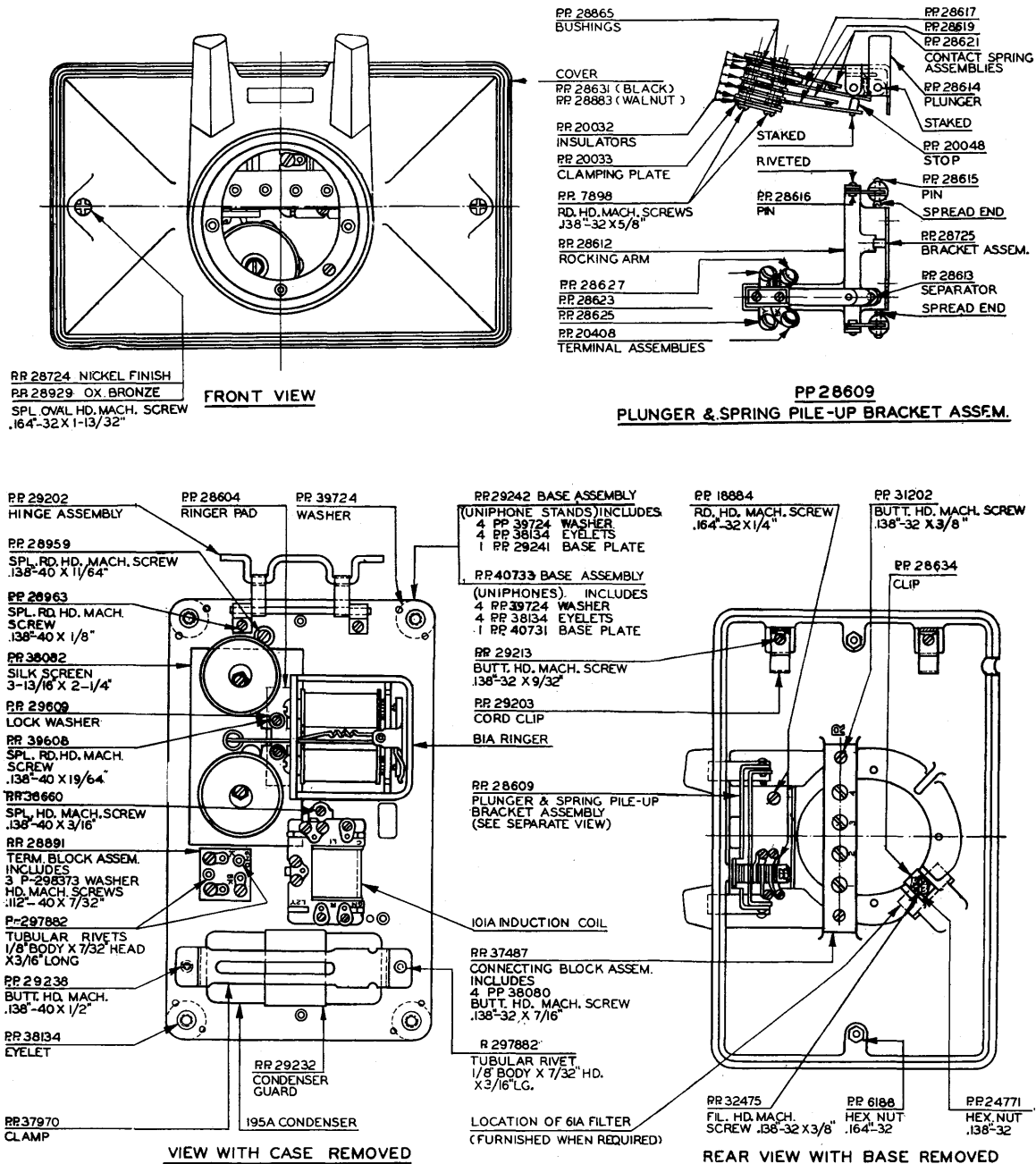
TOP VIEW  
WITH COVER REMOVEDBOTTOM VIEW  
WITH BASE ASSEMBLY REMOVED

For Hand Set Replacement Parts, see Page 73

# UNIPHONES

## Replacement Parts

No. 2 Type Uniphone and Nos. 6 & 8 Uniphone Stands



For Hand Set Replacement Parts, see Page 73



## STANDS, UNIPHONE



Uniphone Stands are partially equipped Uniphones designed to replace desk stands. They present a pleasing appearance and offer all the convenience of Hand Set service.

The Hand Set and Hand Set mountings are made of bakelite and are available in black or grained walnut finish.

The wiring diagram supplied with the Uniphone Stand shows the connections to be made for any of the conditions mentioned below and for the subscriber sets (desk set boxes) listed in the table of the wiring diagram.

### No. 5 Type Uniphone Stand

Table type for Manual Service only.

Suitable cording is provided to permit use with subscriber sets arranged for:

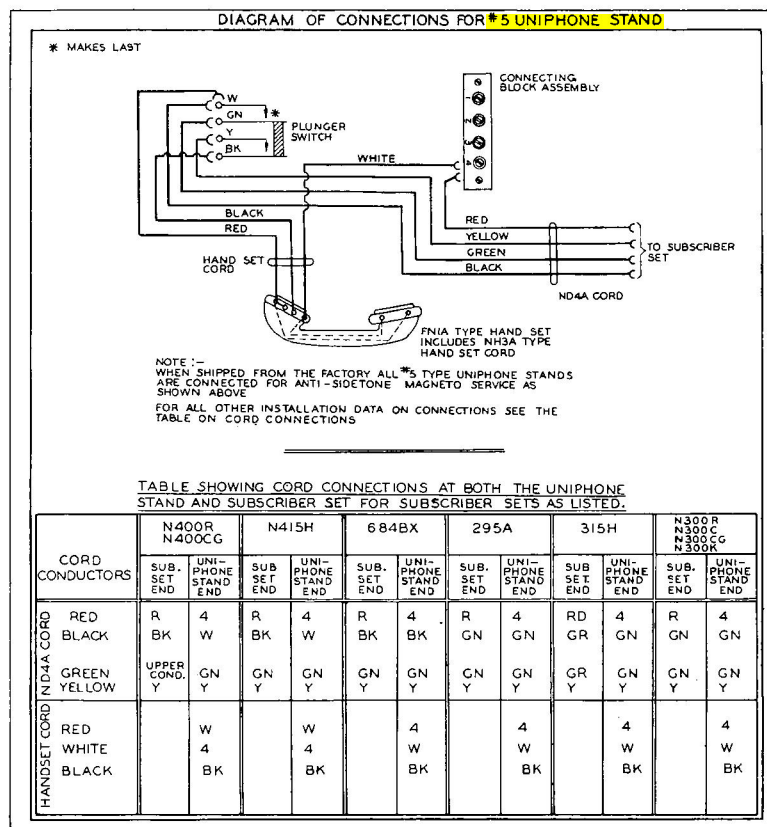
- \*Magneto Anti-Sidetone Service.
- \*Magneto Sidetone Service.
- Common Battery Anti-Sidetone Service.
- Common Battery Sidetone Service.

When shipped the Uniphone Stand is connected for anti-sidetone magneto service.

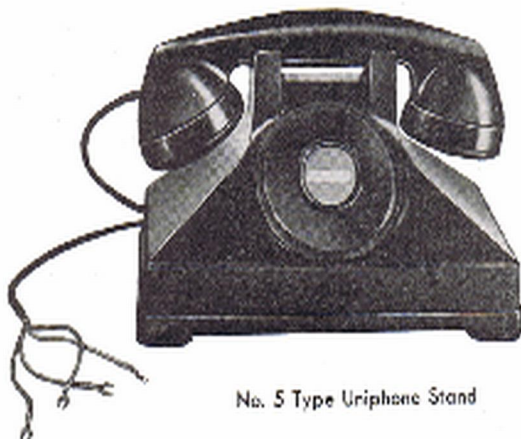
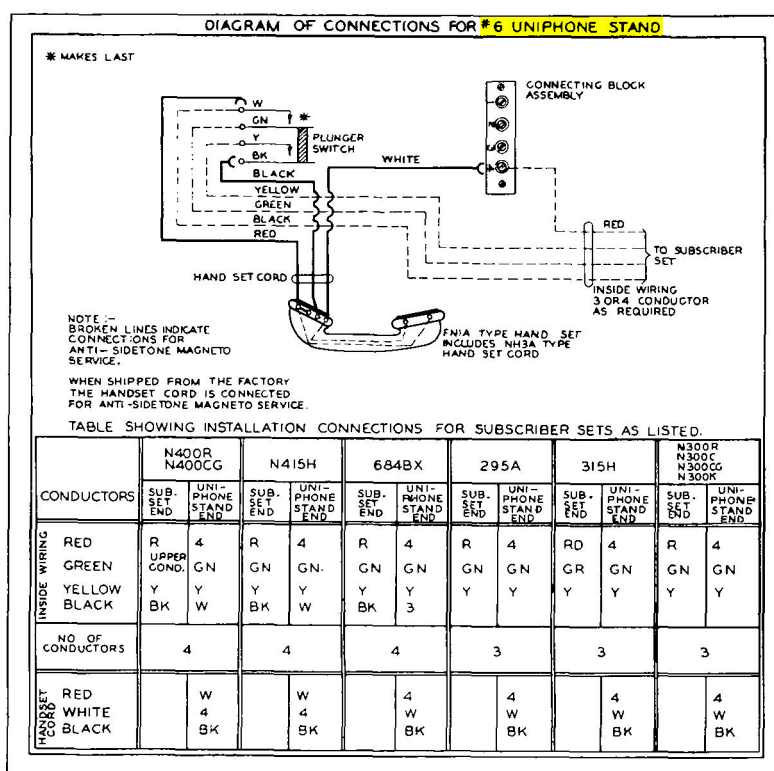
Standard package of 8. Shipping weight 43 lbs.

No. 5 Type Uniphone Stand and Subscriber Set  
(Desk Set Box) for Magneto Service

\*Use two dry cells as local battery.



## STANDS, UNIPHONE



No. 5 Type Uniphone Stand

### No. 7 Type Uniphone Stand

Table Type for Central Battery Dial Service only.

Central Battery Anti-sidetone.

Central Battery Sidetone.

When shipped the Uniphone Stand is connected for anti-sidetone service. The wiring diagram provided with the set shows alternative cord connections to be made for sidetone service.

Orders must specify type of dial to be provided or if to be shipped less dial, the code number of the dial to be used.

Standard package of 8. Shipping weight 49 lbs.

### No. 6 Type Uniphone Stand

Wall Type for Manual Service only.

All connections to the subscriber set are made with inside wire. The wiring diagram provided with the Uniphone Stand shows connections to be made for any of the following services:

\*Magneto Anti-sidetone Service.

\*Magneto Sidetone Service.

Common Battery Anti-Sidetone Service.

Common Battery Sidetone Service.

Standard package of 8. Shipping weight 30 lbs.

\*Use two dry cells as local battery.

### No. 8 Type Uniphone Stand

Wall type for Central Battery Dial Service only.

All connections to the subscriber set are made with inside wire. The wiring diagram provided with the Uniphone Stand shows connections to be made for the following services:

Central Battery Anti-Sidetone.

Central Battery Sidetone.

Orders must specify type of dial to be provided or if to be shipped less dial, the code number of the dial to be used.

Standard package of 8. Shipping weight 36 lbs.



**When the best is required — use a Uniphone Stand**

