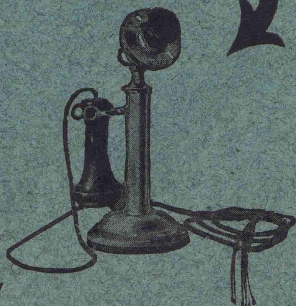


*Western Electric*

DESK  
TELEPHONE  
SETS



# *Western Electric*

## Desk Telephone Sets

---

### INDEX

---

	PAGE
Use . . . . .	2
Design and Construction . . . . .	3
Finish . . . . .	5
Transmitters and Receivers . . . . .	5
Desk Stands . . . . .	7
Desk Set Boxes . . . . .	9
“ “ “ . . Central Battery . . . . .	9
“ “ “ . . Magneto . . . . .	13
Battery Box . . . . .	16
Protection . . . . .	16
Protectors . . . . .	19
Wiring . . . . .	20

---

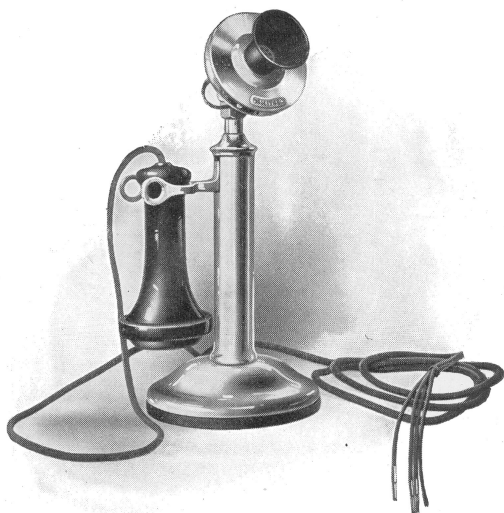
Booklet No. 1079-B.

*Western Electric Company*

---

***Western Electric***  
**Desk Telephone Sets**

Are designed and built to  
give good service



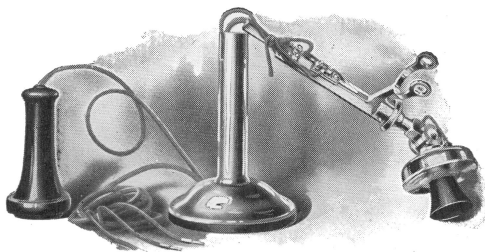
Their popularity proves that  
they do!

# *Western Electric Company*

---

**USE** In the early days of the telephone business the Western Electric Company foresaw that, sooner or later, there would have to be a form of telephone suitable for use on an office desk, so that the business man wishing to telephone would not have to get up from his desk and walk over to a wall telephone. This resulted in the development of the desk stand telephone set, which has done so much for the comfort and convenience of the business world.

The demand for desk stands has been increasing steadily ever since their inception, until at present



No. 1020-B Desk Stand Showing Simplicity of Construction.

practically every office, where telephones are used, is equipped with desk sets. Not only that, but a considerable number of people who have telephone service in their homes prefer them, especially when they are to be placed in their library, den or bed-room.

There are no other types of telephone that equal desk stands from the standpoint of **convenience**. They are **small, compact, portable, and graceful** in every line. Every part is substantially made, so that there is small chance for injury (if a desk set falls to the floor, as a result of careless handling).

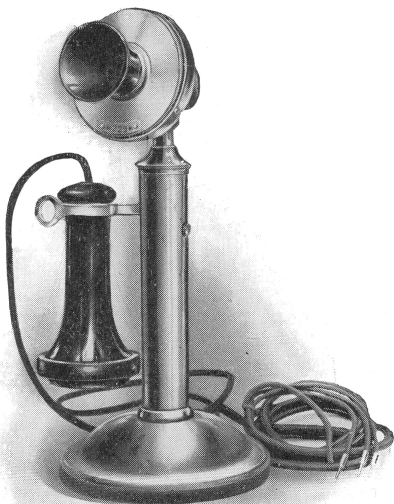


# *Western Electric Company*

---

## **DESIGN AND CONSTRUCTION**

The No. 1020 desk stand sets have been designed to present a graceful appearance, to be light enough to handle with ease, and yet be able to withstand the hard knocks of continuous service. They are made of carefully inspected raw



No. 1020-M Desk Stand With Transmitter Cut-out Button.

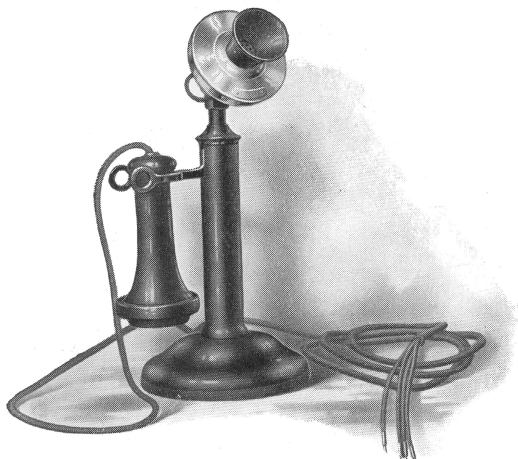
materials, are sturdily built, and every stand is given an exhaustive test under service conditions before it leaves the factory. This results in uniformly good stands and minimum maintenance expense for the user.

The contact springs and binding posts are mounted on a steel terminal plate, which also carries the receiver

# *Western Electric Company*

---

hook and the lug for holding the transmitter. This terminal plate is normally enclosed in the stem or handle of the stand to make it dust-proof and may be removed as a unit by simply loosening **one** screw. In this way the working parts can be taken out for inspection without disturbing the spring adjustments.



No. 1020-S Desk Stand—Black Enamel Finish.

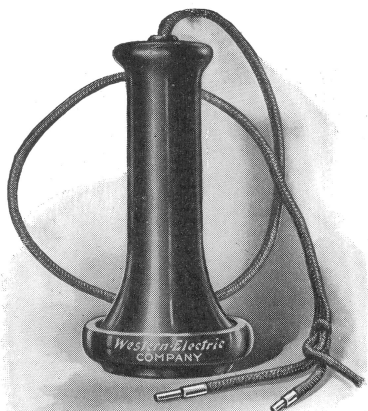
All contact points are of platinum set in German silver springs. The cords enter the stand through a rubber bushed hole in the base of the stand, which in turn is covered underneath with a felt pad to prevent it from scratching even the most highly polished surfaces.

# *Western Electric Company*

---

## **FINISH**

The Nos. 1020-S, 1020-AH, 1020-AL and 1020-AM desk stands, similar to the stands shown on the opposite page, are finished in a durable black on all exposed parts except the transmitter and receiver binding posts. All the other stands of the No. 1020 type are finished in a heavy nickel plate. They may, however, be had in black, if so ordered, without additional charge.



No. 143-W Receiver—Concealed Binding Posts.

## **TRANSMITTERS AND RECEIVERS**

The transmitters and receivers furnished with the desk sets are of the same high quality to be found on every one of the 6,000,000 "Bell" telephones manufactured by us, and on almost every other telephone set to-day in the United States. They give maximum transmission efficiency with a minimum of current consumption.

# *Western Electric Company*

---

The concealed binding post (No. 143-W) receiver is recommended for the No. 1020 type of desk set; but either it or the exposed binding post (No. 122-W) receiver will be furnished, as specified on the order. Both are dust-proof and require no adjustment after leaving the factory.

It is our practice to furnish high resistance transmitters with all of our sets, although we are in a posi-



No. 122-W Receiver—Exposed Binding Posts.

tion to supply low resistance instruments for magneto service. Both types will operate on two cells of dry battery for ordinary magneto service, but three cells are recommended when maximum transmission is desirable, as in the case of long toll connections. Western Electric transmitters do not pack, and adjustment is permanent. Where it is not desired to have the transmitter case form a part of the circuit, insulated transmitters are available.



# *Western Electric Company*

---

## **DESK STANDS**

The various desk stands of the No. 1020 type for central battery and magneto service are listed below. The code numbers should invariably be used when ordering. Prices are list.

Code No.	Description	Standard Finish	List Price Each
<b>1020-BC</b>	For regular local battery bridging or central battery service. Includes: 1 No. 229 W transmitter, 1 No. 122-W receiver, 1 No. 392 cord. This may be used with a No. 7 type coin collector on single party lines, or on party lines when code ringing is employed.	Nickel Plate	<b>\$6.90</b>
<b>1020-C</b>	For operator's telephone set with cordless private exchange. Includes: 1 No. 229-W transmitter, 1 No. 122-W receiver, 1 No. 293 cord.	Nickel Plate	<b>7.15</b>
<b>1020-H</b>	For intercommunicating service. Includes: 1 No. 229-W transmitter, 1 No. 143-W receiver, 1 No. 289 cord.	Nickel Plate	<b>7.25</b>
<b>1020-J</b>	For operator's telephone set with No. 128-W receiver. Provision is not made for a switch hook. Includes: 1 No. 229-W transmitter, 1 No. 128-W head receiver, 1 6-ft. No. 178 cord, 1 6-ft. No. 10 cord, 1 9-in. No. 179 cord.	Nickel Plate	<b>6.90</b>
<b>1020-MC</b>	For central or local battery service with transmitter cut-out button. Includes: 1 No. 229-W transmitter, 1 No. 122-W receiver, 1 No. 392 cord.	Nickel Plate	<b>7.15</b>

# *Western Electric Company*

---

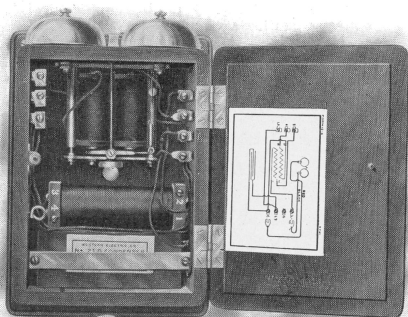
Code No.	Description	Standard Finish	List Price Each
<b>1020-PC</b>	For local battery bridging or central battery service including harmonic selective; with insulated transmitter. Includes: 1 No. 291-W transmitter, 1 No. 143-W receiver, 1 No. 450 cord.	Nickel Plate	<b>\$6.90</b>
<b>1020-SC</b>	For regular local battery bridging or central battery service. Includes: 1 No. 229-W transmitter, 1 No. 122-W receiver, 1 No. 392 cord. This stand is the same as the No. 1020-BC except the finish.	Black	<b>6.90</b>
<b>1020-AG</b>	For central battery series telephone sets with insulated transmitter. Includes: 1 No. 291-W transmitter, 1 No. 171-W receiver, 1 No. 418 cord.	Nickel Plate	<b>6.55</b>
<b>1020-AH</b>	For central battery series telephone sets with insulated transmitter. Same as No. 1020-AG except finish.	Black	<b>6.55</b>
<b>1020-AK</b>	For central battery series telephone sets with non-insulated transmitter. Includes: 1 No. 293-W transmitter, 1 No. 171-W receiver, 1 No. 451 cord.	Nickel Plate	<b>6.30</b>
<b>1020-AL</b>	For local battery bridging or central battery service with insulated transmitter, same as No. 1020-PC except finish.	Black	<b>6.90</b>
<b>1020-AM</b>	For central battery series telephone sets with non-insulated transmitter, same as No. 1020-AK except finish.	Black	<b>6.30</b>

# *Western Electric Company*

## **DESK SET BOXES**

### **FOR CENTRAL BATTERY SYSTEMS**

The equipments for central battery systems are designed for five classes of service, namely:—direct, two-party selective, and four-party semi-selective; series; harmonic selective; series harmonic selective, and four-party selective. The desk set boxes ordinarily contain a ringer, condenser and induction coil. In the series sets the induction coil is omitted, while in the harmonic selec-



No. 295 Type Desk Set Box—Open.

tive sets the ringers are tuned to operate on different frequencies, so that four sets bridged across the circuit or eight bridged to ground may be rung selectively. With the four-party selective ringing systems, a polarized relay having biased ringers wired to ground from its local contacts is provided. Except when ringing current is applied, the relay opens the connection from ringer to ground, thus freeing the line from possible noises.

# *Western Electric Company*

---

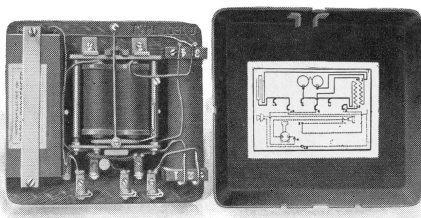
## CENTRAL BATTERY DESK SET BOXES

Code No.	Description	List Price Each
<b>131-J</b>	Metal—For direct, two-party selective or four-party semi-selective service. Includes: 1 No. 17-A (1000-ohm biased) ringer, 1 No. 21-L condenser, 1 No. 20 induction coil.	<b>\$4.35</b>
<b>295-A</b>	Wood—For direct, two-party selective or four-party semi-selective service. This may be used with the No. 7 type coin collector on single party lines, or on party lines when code ringing is employed. Includes: 1 No. 8-AG (1000-ohm biased) ringer, 1 No. 21-D condenser, 1 No. 20 induction coil.	<b>4.85</b>
<b>295-AA</b>	Wood—For local battery talking and central battery signaling service. Includes: 1 No. 8-AG (1000-ohm biased) ringer, 1 No. 21-D condenser, 1 No. 13 induction coil.	<b>4.60</b>
<b>295-AC</b>	Wood—For extension service to a main telephone set on a direct, two-party selective or four-party semi-selective system. No ringer is furnished. Includes: 1 No. 21-D condenser, 1 No. 20 induction coil.	<b>3.35</b>
<b>295-AM</b>	Wood—For central battery harmonic selective signaling service. Includes: 1 No. 41-SG (460-ohm) ringer, 1 No. 21-D condenser, 1 No. 20 induction coil.	<b>6.40</b>
<b>295-AN</b>	Wood—For central battery harmonic selective signaling service Includes: 1 No. 41-TG (460-ohm) ringer, 1 No. 21-D condenser, 1 No. 20 induction coil.	<b>6.40</b>
<b>295-AP</b>	Wood—For central battery harmonic selective signaling service. Includes: 1 No. 41-UG (460-ohm) ringer, 1 No. 21-D condenser, 1 No. 20 induction coil.	<b>6.40</b>
<b>295-AR</b>	Wood—For central battery harmonic selective signaling service. Includes: 1 No. 41-RG (1800-ohm) ringer, 1 No. 21-D condenser, 1 No. 20 induction coil.	<b>6.75</b>
<b>295-AT</b>	Wood—For series service on a single, two-party selective or four-party semi-selective system. Includes: 1 No. 8-AG (1000-ohm biased) ringer, 1 No. 21-F condenser.	<b>4.50</b>



# Western Electric Company

Code No.	Description	List Price Each ..
<b>295-AW</b>	Wood—For series harmonic selective signaling service. Includes: 1 No. 41-SG (460-ohm) ringer, 1 No. 21-F condenser.	<b>\$5.20</b>
<b>295-AY</b>	Wood—For series harmonic selective signaling service. Includes: 1 No. 41-TG (460-ohm) ringer, 1 No. 21-F condenser.	<b>5.20</b>
<b>295-BA</b>	Wood—For series harmonic selective signaling service. Includes: 1 No. 41-UG (460-ohm) ringer, 1 No. 21-F condenser.	<b>5.20</b>
<b>295-BB</b>	Wood—For series harmonic selective signaling service. Includes: 1 No. 41-RG (1800-ohm) ringer, 1 No. 21-F condenser.	<b>5.55</b>

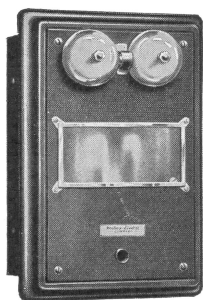


No. 131-J Desk Set Box with Cover Removed.

<b>297-A</b>	Wood—For four-party selective service. Includes: 1 No. 8-BG (2500-ohm biased) ringer, 1 No. 21-D condenser, 1 No. 20 induction coil, 1 No. 85-B relay.	<b>9.15</b>
<b>334-A</b>	Metal—For direct, two-party or four-party semi-selective service. Includes: 1 No. 8-AG (1000-ohm biased) ringer, 1 No. 21-D condenser, 1 No. 20 induction coil.	<b>4.85</b>
<b>334-E</b>	Metal—For central battery harmonic selective signaling service. Includes: 1 No. 41-SG (460-ohm) ringer, 1 No. 21-D condenser, 1 No. 20 induction coil.	<b>6.40</b>

# Western Electric Company

Code No.	Description	List Price Each
<b>334-F</b>	Metal—For central battery harmonic selective signaling service. Includes: 1 No. 41-TG (460-ohm) ringer, 1 No. 21-D condenser, 1 No. 20 induction coil.	<b>\$6.40</b>
<b>334-G</b>	Metal—For central battery harmonic selective signaling service. Includes: 1 No. 41-UG (460-ohm) ringer, 1 No. 21-D condenser, 1 No. 20 induction coil.	<b>6.40</b>
<b>334-H</b>	Metal—For central battery harmonic selective signaling service. Includes: 1 No. 41-RG (1800-ohm) ringer, 1 No. 21 D condenser, 1 No. 20 induction coil.	<b>6.75</b>



No. 358 Type Desk Set Box—Closed.

<b>334-J</b>	Metal—For series harmonic selective signaling service. Includes: 1 No. 41-SG (460-ohm) ringer, 1 No. 21-F condenser, 1 No. 20 induction coil.	<b>5.50</b>
<b>334-K</b>	Metal—For series harmonic selective signaling service. Includes: 1 No. 41-TG (460-ohm) ringer, 1 No. 21-F condenser, 1 No. 20 induction coil.	<b>5.50</b>
<b>334-L</b>	Metal—For series harmonic selective signaling service. Includes: 1 No. 41-UG (460-ohm) ringer, 1 No. 21-F condenser, 1 No. 20 induction coil.	<b>5.50</b>

# Western Electric Company

Code No.	Description	List Price Each
<b>334-M</b>	Metal—For series harmonic selective signaling service. Includes: 1 No. 41-RG (1800-ohm) ringer, 1 No. 21-F condenser, 1 No. 20 induction coil.	<b>\$5.85</b>
<b>334-N</b>	Metal—For series service on a direct two-party selective or four-party semi-selective system. Includes: 1 No. 6-AG (1000-ohm biased) ringer, 1 No. 21-F condenser.	<b>3.55</b>
<b>358-A</b>	Semi-flush metal—For direct, two-party selective or four-party semi-selective service. Includes: 1 No. 16-BG (2500-ohm biased) ringer, 1 No. 21-D condenser, 1 No. 20 induction coil.	<b>7.50</b>
<b>358-C</b>	Semi-flush metal—For series service on a direct, two-party selective or four-party semi-selective system. Includes: 1 No. 16-BG (2500-ohm biased) ringer, 1 No. 21-F condenser.	<b>6.25</b>

## FOR MAGNETO SYSTEMS

The desk set boxes which comprise the auxiliary equipment in magneto systems present the same general outward appearance as those used in central battery systems. The apparatus contained in the boxes is somewhat different, including a hand generator in addition to the ringer and induction coil, while some sets are equipped with a condenser. The condenser is used on lines where code signaling is used and is wired in series with the receiver so that in case several other receivers on the same line are off the hooks, it will still be possible to secure good signaling. Those sets not containing condensers may easily be equipped with them, if desired, at a nominal cost.

The sets of the No. 295, 300, 315 and 354 type are furnished in oak and walnut.

# Western Electric Company

---

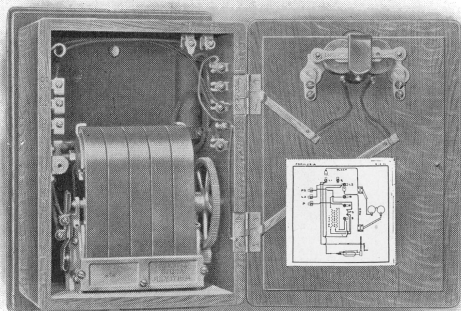
## MAGNETO DESK SET BOXES

Code No.	Description	List Price Each
<b>300-K</b>	For heavy load rural service where code ringing is employed. Includes: 1 No. 38 BG (2500-ohm unbiased) ringer, 1 No. 48-A (5-bar A. C.) generator, 1 No. 13 induction coil.	<b>\$10.45</b>
<b>300-L</b>	For moderate load rural service where code ringing is employed. Includes: 1 No. 38-FG (1600-ohm unbiased) ringer, 1 No. 48-A (5-bar A. C.) generator, 1 No. 13 induction coil.	<b>10.45</b>
<b>300-M</b>	For moderate load rural service where code ringing is employed. With condenser in series with receiver. Includes: 1 No. 38-FG (1600-ohm unbiased) ringer, 1 No. 48-A (5-bar A. C.) generator, 1 No. 13 induction coil, 1 No. 21-W condenser.	<b>11.30</b>
<b>300-N</b>	For heavily loaded rural service where code ringing is employed. With condenser in series with receiver. Includes: 1 No. 38-BG (2500-ohm unbiased) ringer, 1 No. 48-A (5-bar A. C.) generator, 1 No. 13 induction coil, 1 No. 21-W condenser.	<b>11.30</b>
<b>315-G</b>	For series service where code ringing is employed. Includes: 1 No. 38-JG (50 ohm unbiased) ringer, 1 No. 22-B (3-bar A. C.) generator, 1 No. 13 induction coil.	<b>6.75</b>
<b>315-H</b>	For light load bridging service where code ringing is employed. Includes: 1 No. 38-AG (1000-ohm unbiased) ringer, 1 No. 22-A (3-bar A. C.) generator, 1 No. 13 induction coil.	<b>6.85</b>
<b>315-J</b>	For two- or four-party selective service. Includes: 1 No. 46-BG (2500-ohm biased) ringer, 1 No. 22-E (2-bar A. C.) generator, 1 No. 13 induction coil.	<b>7.45</b>
<b>354-A</b>	For harmonic selective signaling. Operates on 33½ cycle ringing current. Includes: 1 No. 41-SG (460 ohm) ringer, 1 No. 22-T (3-bar A. C.) generator, 1 No. 13 induction coil, 1 No. 21-F condenser.	<b>9.10</b>
<b>354-E</b>	For harmonic selective signaling. Operates on 50 cycle ringing current. Includes: 1 No. 41-TG (460-ohm) ringer, 1 No. 22-T (3-bar A. C.) generator, 1 No. 13 induction coil, 1 No. 21-F condenser.	<b>9.10</b>



# Western Electric Company

Code No.	Description	List Price Each
<b>354-F</b>	For harmonic selective signaling. Operates on 66 $\frac{2}{3}$ cycle ringing current. Includes: 1 No. 41-UG (460-ohm) ringer, 1 No. 22-T (3-bar A. C.) generator, 1 No. 13 induction coil, 1 No. 21-F condenser.	<b>\$9.10</b>
<b>354-G</b>	For harmonic selective signaling. Operates on 16 $\frac{2}{3}$ cycle ringing current. Includes: 1 No. 41-RG (1800 ohm) ringer, 1 No. 22-T (3-bar A. C.) generator, 1 No. 13 induction coil, 1 No. 21-F condenser.	<b>9.45</b>



No. 300 Type Desk Set Box—Open.

The following magneto desk set boxes are intended for furnishing extension service to main telephone sets, and are not provided with generators.

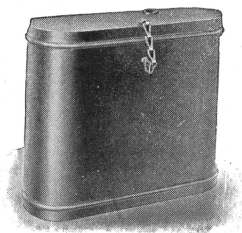
Code No.	Description	List Price Each
<b>295-S</b>	For light load bridging service where code ringing is employed. Includes: 1 No. 4-AG (1000-ohm unbiased) ringer, 1 No. 13 induction coil.	<b>\$3.70</b>
<b>295-Y</b>	For heavy load service where code ringing is employed. Includes: 1 No. 8-BG (2500-ohm biased) ringer, 1 No. 13 induction coil.	<b>4.10</b>
<b>295-AB</b>	For all classes of bridging magneto service with condenser in series with receiver. No ringer is provided. Includes: 1 No. 13 induction coil, 1 No. 21-W condenser.	<b>3-10</b>

# *Western Electric Company*

---

## **BATTERY BOX**

The magneto desk set boxes listed herein are not arranged with space for the dry cells making up the local battery. To provide for these cells a No. 1-A battery box may be obtained. This is a black enameled metal case designed to hold three cells of Western Electric Blue Bell Battery or others of like dimensions.



No. 1-A Battery Box.

The cover cannot be lost or mislaid, as it is attached to the case by a short chain. The battery box is also provided with bushed holes for leading-in wires.

The list price is 75 cents each.

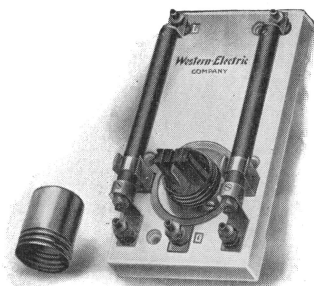
## **PROTECTION**

### **WHAT PROTECTORS ARE FOR**

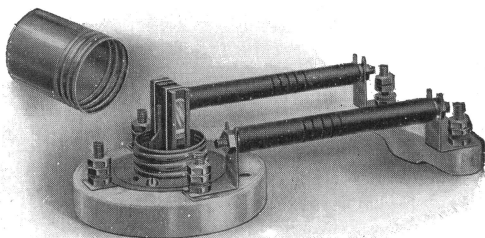
Wherever telephone wires are run in exposed places, it is customary that they be protected from lightning as well as from any high potential lighting or power circuits which may be strung on the same poles or on pole lines crossing the telephone lines.

# *Western Electric Company*

---



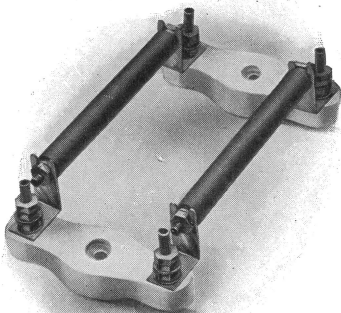
No. 12-A Protector.



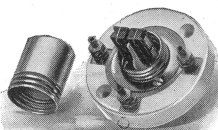
No. 58-A or B Protector.

# *Western Electric Company*

---



No. 59-A Protector.



No. 60-A or E Protector.

# *Western Electric Company*

---

## **LOCATION**

The leading telephone experts unite in expressing their opinion that the protectors should be placed at the point where the line wires enter the building. This makes it possible to place the protectors where they will not be tampered with and accidentally grounded. This is why Western Electric telephone sets and desk set boxes are not equipped with protectors, mounted on the set.

The following list gives descriptions and list prices of various protectors:—

## **PROTECTORS**

Code No.	Description	List Price Each
<b>12-A</b>	Two heat coils, two 7-ampere fuses and two carbon open space cut-outs, mounted on a porcelain base.	<b>\$1.22</b>
<b>58-A</b>	Two 7-ampere fuses and two carbon open space cut-outs, mounted on two porcelain bases.	<b>.77</b>
<b>58-B</b>	Two 7-ampere fuses and two copper open space cut-outs, mounted on two porcelain bases.	<b>.95</b>
<b>59-A</b>	Two 7-ampere fuses, mounted on two porcelain bases.	<b>.48</b>
<b>60-A</b>	Two carbon open space cut-outs, mounted on a porcelain base.	<b>.38</b>
<b>60-E</b>	Two metal open space cut-outs, mounted on a porcelain base.	<b>.675</b>

## **PROTECTOR MOUNTING**

<b>48</b>	Asbestos mat for use under the No. 58 or No. 59 protectors to protect the woodwork or other surface on which the protector is mounted.	<b>.021</b>
-----------	--	-------------

# *Western Electric Company*

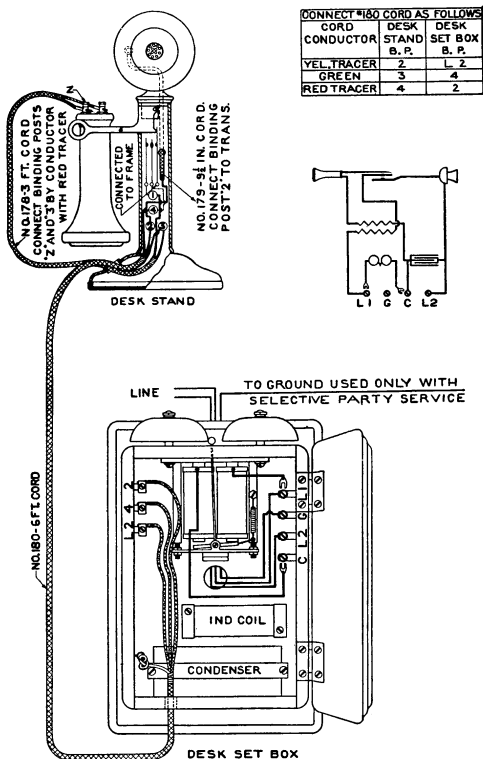
---

## **WIRING**

A change has been made recently in the method of designating the terminals on those desk stands most universally used and on desk set boxes, to facilitate connecting up. Other desk stands will be changed in time. In place of the numbers formerly used, letters, which indicate the color of the tracers in the cord conductor, are used. The designations used for the most part are "GN" (green); "R" (red); "Y" (yellow); "W" (white); and "YY" (double yellow). The colors of the cord conductors are readily distinguishable, and it therefore becomes practically impossible to make an error in wiring a desk set equipment if ordinary care is used.

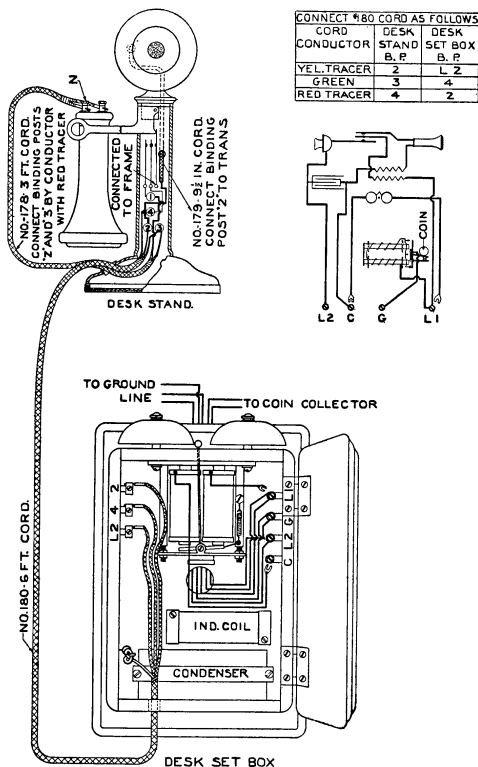
As a great number of desk stands bearing the old numbered designations are still in use, we give, in the following pages, wiring diagrams showing the terminal designations according to the old method; and following these are given wiring diagrams showing the color code method on the new style desk sets. The diagrams are labeled "Old Style" and "New Style," respectively, for easy identification.

# Western Electric Company



Method of connecting desk stand to central battery desk set box.  
Bridging or two-party selective service.  
(Old style marking.)

# Western Electric Company

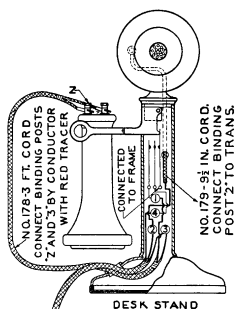


Method of connecting desk stand and coin collector to central battery desk set box.

Bridging service.  
(Old style marking.)

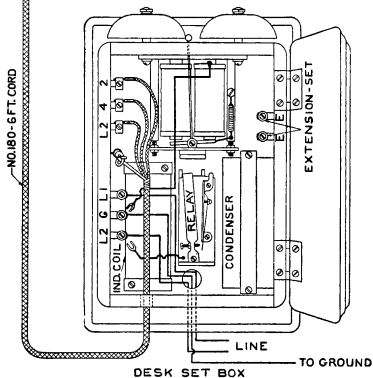
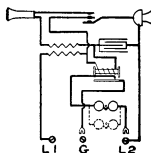


# Western Electric Company



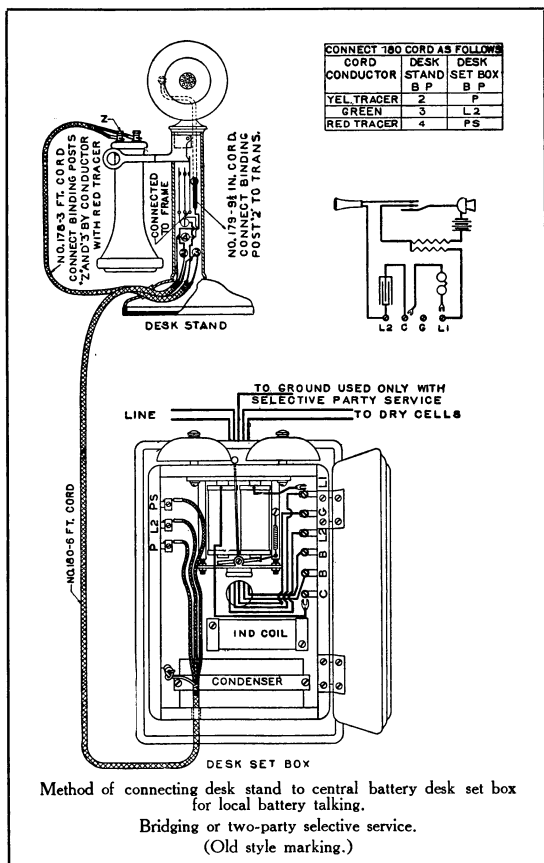
CONNECT #180 CORD AS FOLLOWS

CORD CONDUCTOR	DESK STAND B. P.	DESK SET BOX B. P.
YEL TRACER	2	L 2
GREEN	3	4
RED TRACER	4	2

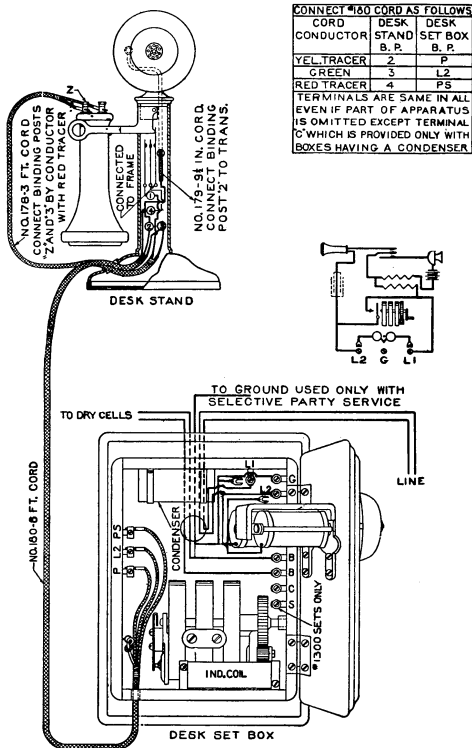


Method of connecting desk stand to central battery desk set box.  
Four-party selective service.  
(Old style marking.)

# Western Electric Company

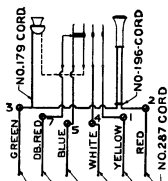
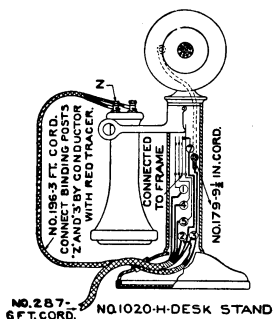
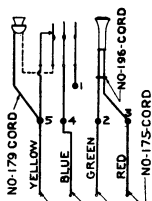
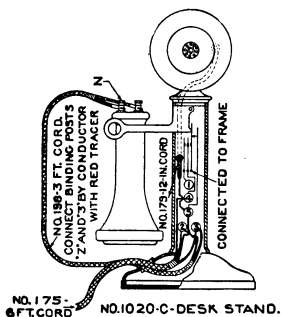


# Western Electric Company



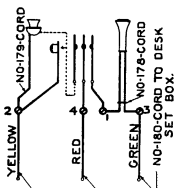
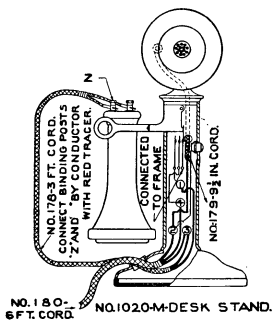
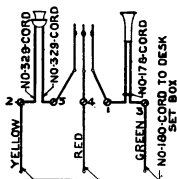
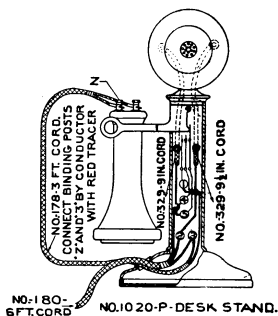
Method of connecting desk stand to magneto desk set box.  
(Old style marking.)

# Western Electric Company



Details of connections of No. 1020-C and No. 1020-H desk stands.

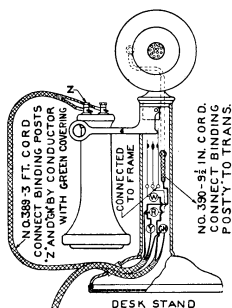
# Western Electric Company



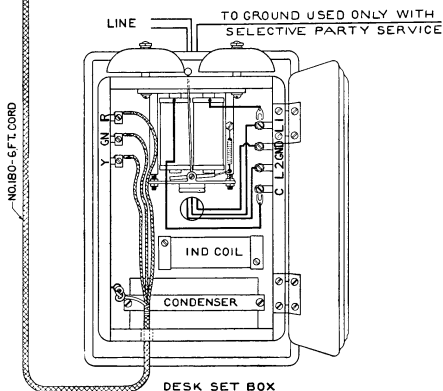
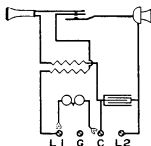
(Old style marking.)

Details of connections of No. 1020-P and No. 1020-M desk stands.

# Western Electric Company

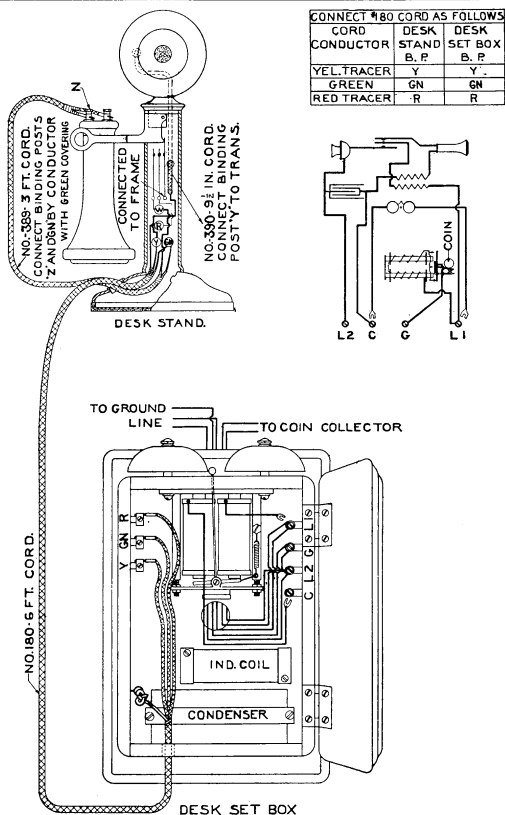


CONNECT #180 CORD AS FOLLOWS		
CORD CONDUCTOR	DESK STAND B. P.	DESK SET BOX B. P.
YEL. TRACER	Y	Y
GREEN	GN	GN
RED TRACER	R	R



Method of connecting desk stand to central battery desk set box.  
Bridging or two-party selective service.  
(New style marking.)

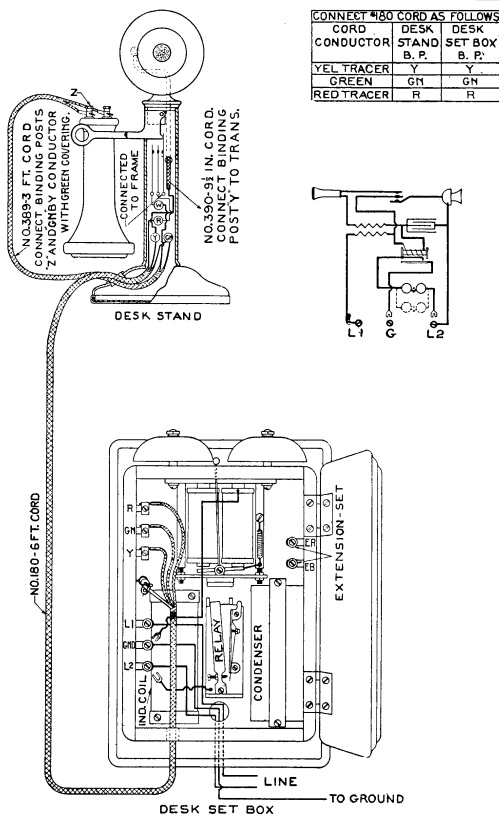
# Western Electric Company



Method of connecting desk stand and coin collector to central battery desk set box. Bridging service.

(New style marking.)

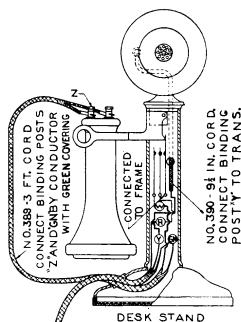
# Western Electric Company



Method of connecting desk stand to central battery desk set box.  
Four-party selective service.  
(New style marking.)

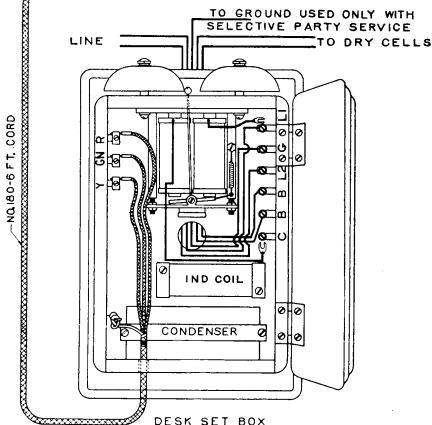
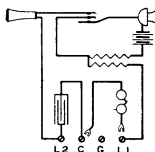


# Western Electric Company



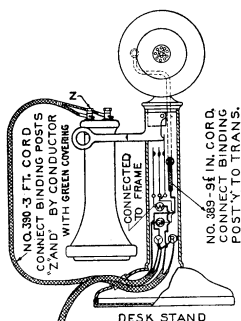
CONNECT 180 CORD AS FOLLOWS

CORD CONDUCTOR	DESK STAND B P	DESK SET BOX B P
YEL. TRACER	Y	Y
GREEN	GN	GN
RED TRACER	R	R



Method of connecting desk stand to central battery desk set box for local battery talking.  
Bridging or two-party selective service.  
(New style marking.)

# Western Electric Company

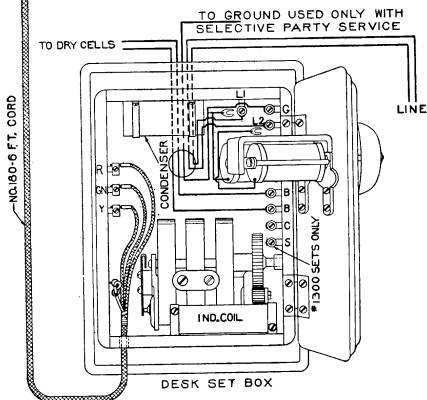
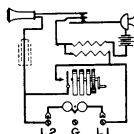


DESK STAND

CONNECT #160 CORD AS FOLLOWS

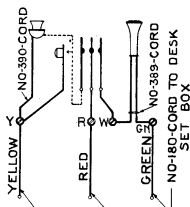
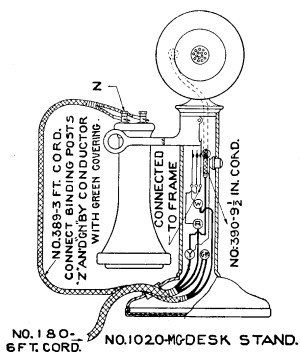
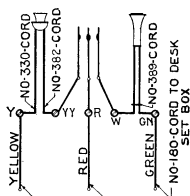
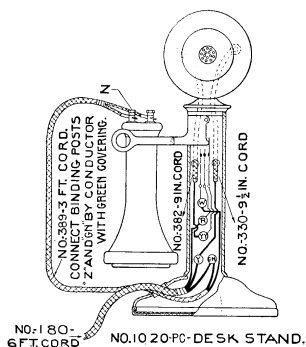
CORD CONDUCTOR	DESK STAND B. P.	DESK SET BOX B. P.
YEL. TRACER	Y	Y
GREEN	GN	GN
RED TRACER	R	R

TERMINALS ARE SAME IN ALL EVEN IF PART OF APPARATUS IS OMITTED EXCEPT TERMINAL 'C' WHICH IS PROVIDED ONLY WITH BOXES HAVING A CONDENSER



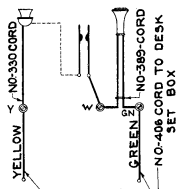
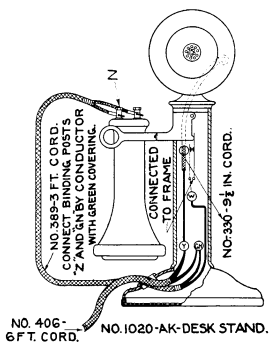
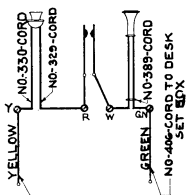
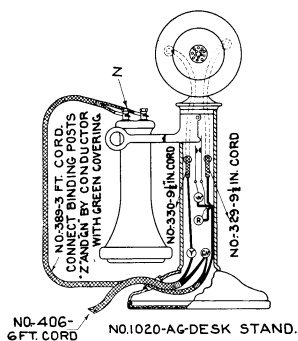
Method of connecting desk stand to magneto desk set box.  
(New style marking.)

# Western Electric Company



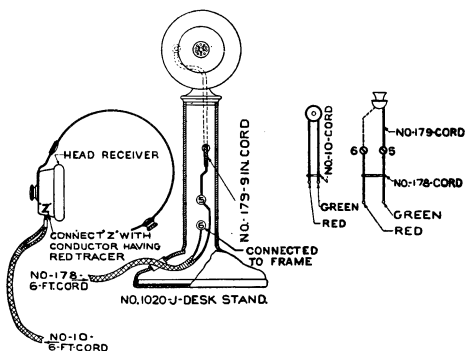
Connections of No. 1020-PC and No. 1020-MC desk stands.  
(New style marking.)

# Western Electric Company



Connections of No. 1020-AG and No. 1020-AK desk stands.  
(New style marking.)

# Western Electric Company



Connections of No. 1020-J desk stand.

# ***Western Electric Company***

---

**Manufacturer and Supplier of all Apparatus and  
Equipment used in the Construction, Operation  
and Maintenance of Telephone Plants**

---

NEW YORK, N. Y.  
463 West Street

PHILADELPHIA, PA.  
11th and York Sts.

BOSTON, MASS.  
115 Purchase Street

PITTSBURGH, PA.  
Post Office Box 1591

ATLANTA, GA.  
230 Lee Street

BUFFALO, N. Y.  
98 Terrace

---

RICHMOND, VA.  
6th and Carey Streets

---

CHICAGO, ILL.  
500 So. Clinton Street

INDIANAPOLIS, IND.  
135 So. Penn. Street

MILWAUKEE, WIS.  
378 E. Water Street

CINCINNATI, OHIO  
301 Walnut Street

MINNEAPOLIS, MINN.  
114-120 3rd Street No.

ST. PAUL, MINN.  
235 E. 6th Street

ST. LOUIS, MO.  
814 Spruce Street

KANSAS CITY, Mo.  
611-613 Wyandotte St.

OMAHA, NEB.  
802 Farnum Street

DENVER, COLO.  
1425-27 Curtis Street

DALLAS, TEXAS  
Pacific Ave. and Ervay Street

OKLAHOMA CITY, OK.  
1 East 6th Street

SAN FRANCISCO, CAL.  
680 Folsom Street

SEATTLE, WASH.  
1518 First Ave. South

PORTLAND, ORE.  
45 N. 5th Street

LOS ANGELES, CAL.  
117 E. Seventh Street

SALT LAKE CITY, U.  
105 West Second South Street

OAKLAND, CAL.  
507 16th Street

---

MONTREAL, WINNIPEG AND VANCOUVER

---

BERLIN

LONDON

PARIS

ANTWERP

JOHANNESBURG

SYDNEY

TOKYO

---

*Complete Stocks are Carried at All the Above Points*

**WRITE OUR NEAREST HOUSE**

**"SAVE TIME AND FREIGHT"**



**"TELEPHONE OUR NEAREST HOUSE"**