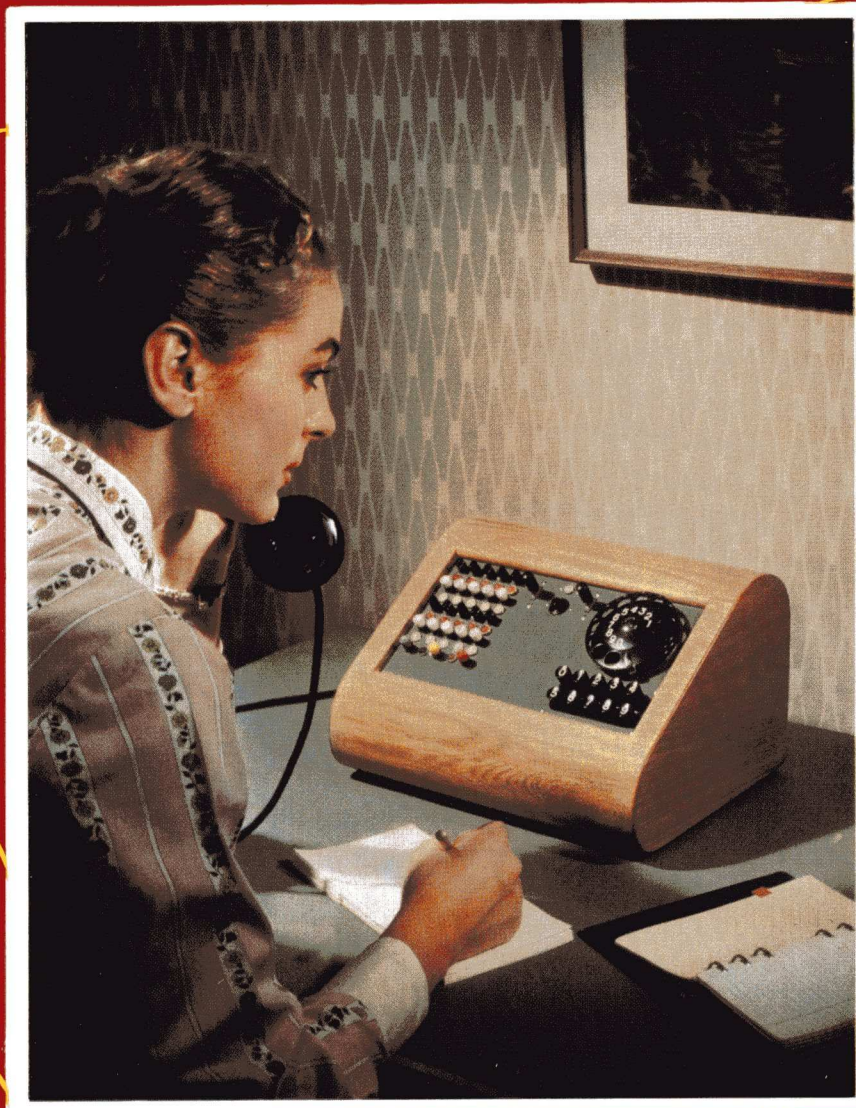


Ericsson
LM



Private Automatic Branch Exchange ALD 25

Telephone problems?

When your company was small

and your premises fairly limited, consisting perhaps of one or two officerooms, you didn't have any worries about telephones. You were probably quite happy having a couple of instruments connected to the public exchange just as for ordinary subscribers.

As your company has grown

your premises have been enlarged and more people employed, the problem of "Telecommunications" begins to lie uppermost in your mind. For the smooth running of your organization you need reliable and comfortable telephone communications not only for outside calls but also—and this is important—for communication within your organization. It may also be necessary to cut down the number of lines to the public network and increase the utilization of those already in hand, by reserving them for outside calls only and making them available to a larger number of extensions.

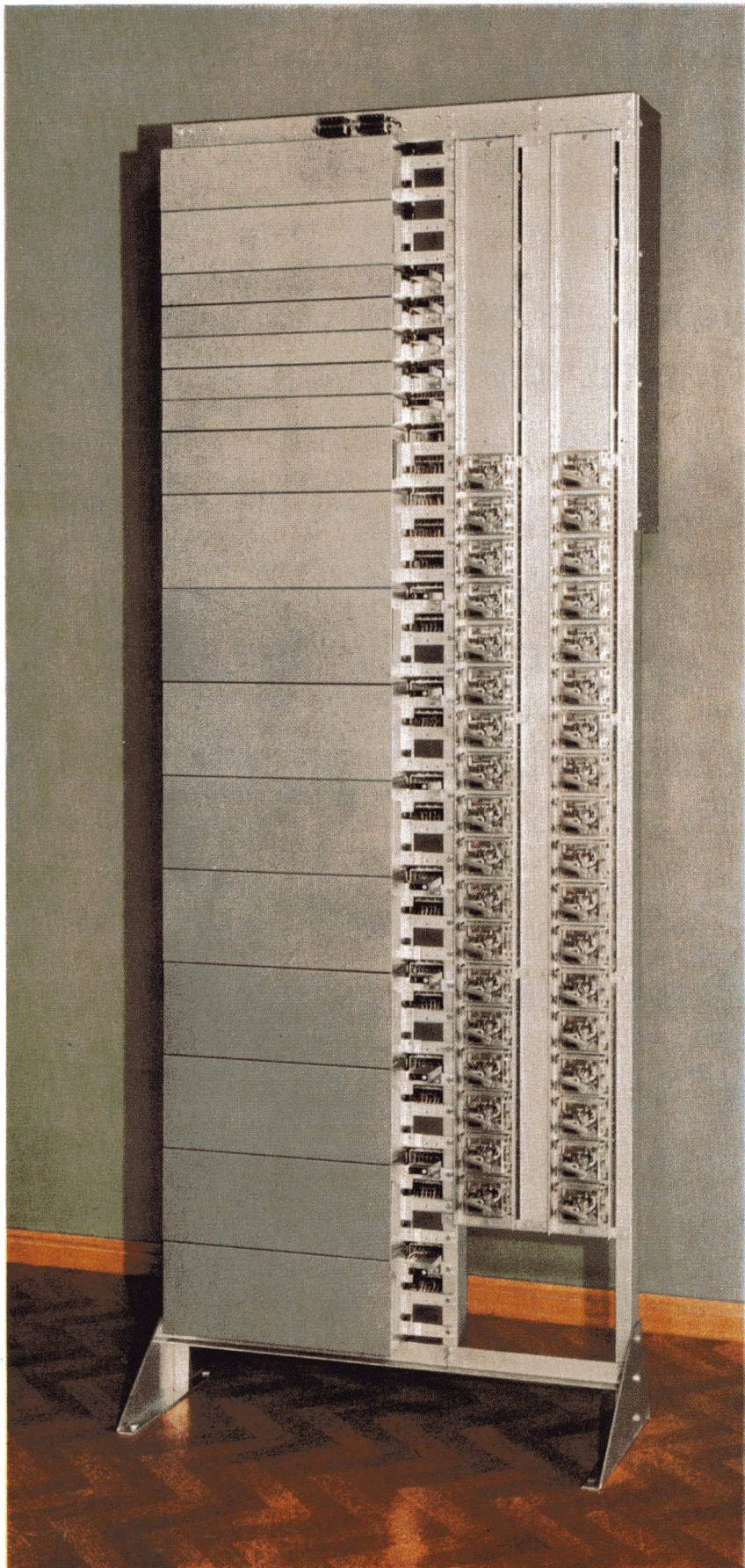
The solution

of your problem is a private automatic branch exchange P.A.B.X. which provides facilities for internal as well as external calls from the same extension. This exchange provides the quickest connection with the least trouble—just a matter of lifting the receiver and dialling a number.

LM Ericsson presents

the private automatic branch exchange type ALD 25. Up to 50 extension lines and 8 public exchange lines may be connected to this branch exchange, enabling 5 internal and 8 external calls to be carried on at the same time.

ALD 25 ensures
quick and direct
connections at low
cost, it saves time
and labour.

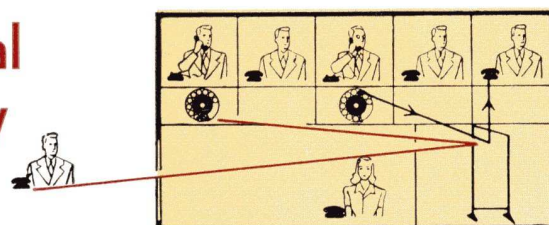


8/5/50

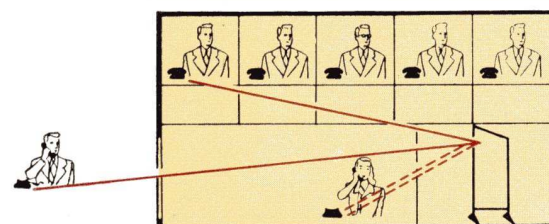
ALD 25 – the Private Automatic Branch E

Traffic Facilities

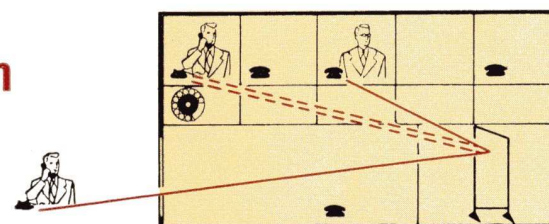
Internal and outgoing external calls established automatically



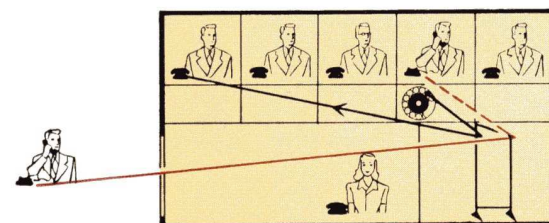
Incoming calls switched by key-set



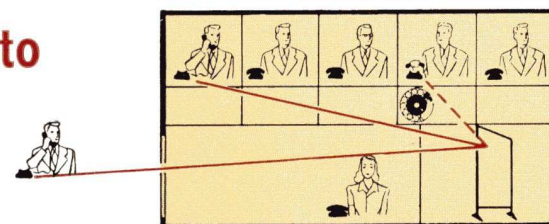
Incoming calls dealt with even if operator off duty



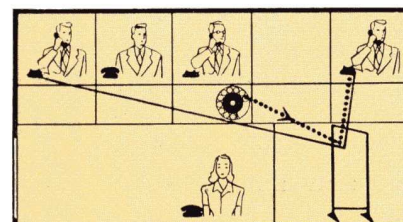
Enquiry during external call



Auto transfer of external call to other extension



Priority for executive's calls



Exchange for **50** extension lines and **8** exchange lines

● Internal calls are established entirely automatically by dialling. Outgoing calls to the public exchange are set up by dialling «0», followed by the subscriber's number.

● Incoming calls from the public exchange are signalled to the P.A.B.X. operator, who has merely to press a button in her instrument to connect to the wanted person. If the called number is engaged, the operator can enter the connection to inform the extension that a call is waiting and, if desired, may interrupt the first call in favour of the new one.

● Whenever the operator leaves her place, as at the close of office hours, she switches over the night connection key in her instrument. Incoming calls will then be directed to a predetermined extension from which they are transferred to other extensions as required. To prevent calls from being held up in the operator's instrument if the operator leaves the P.A.B.X. without switching over the night connection key, any incoming call not answered within 30 seconds is always connected to the "night connection" extension.

● An extension engaged on an external call can make an enquiry call to another extension by dialling «1» and then the number of the wanted extension. On completion of the enquiry, return to the original external call is effected by again dialling «1». An enquiry call in the course of an external connection can also be made to the P.A.B.X. operator or to an *outside* subscriber.

● If an external call is to be transferred to another extension (see previous figure), the caller simply replaces his handset after receiving a reply from the required extension. The external call is then automatically transferred.

● Up to three extensions may be given the facility of always getting through to other extensions, even when the latter are engaged. Such priority is usually arranged for executives, for the operator, or for other persons needing immediate answer.

Extension instruments can be supplied open, semi-barred or barred as desired. *Open extensions* can both receive and dial external calls. *Semi-barred extensions* can receive calls from the public exchange but can themselves only call internal extensions. *Barred extensions* have no facility of communication with the public network. The subscription rates for barred extensions are usually lower than for open or semi-barred extensions.

ALD 25

Operating Features

Can be connected to any public telephone exchange

ALD 25 can be connected to any system of automatic public exchange. It will likewise operate with any manual public exchange, whether of central battery or magneto type.

Long extension lines

The resistance of a two-wire local line connected to the ALD exchange may amount to as much as 500 ohms. This figure corresponds to 2.8 km (1¾ miles) of two-wire cable with 0.5 mm (No. 24 AWG) copper conductors and normal insulation.

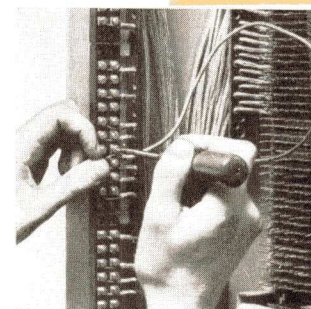
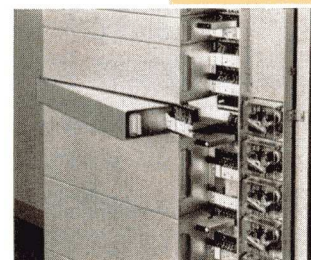
Low current consumption

The current consumption at 24 V is only 0.4 A for an internal call and 0.5 A for an external call.

The power supply is a 24-volt battery with a charger connected to the mains. In places where mains failures are infrequent the battery and charger can be substituted by a battery eliminator.

Wide voltage limits

The exchange is designed to operate on a voltage of 24 volts, but the voltage may vary between 22 volts and 28 volts without reducing the reliability.



Details of design

- The circuit components are assembled on an aluminium enamelled floor-rack of the following dimensions: height 2500 mm, width 920 mm and overall depth 475 mm.

Operator's instrument small and easy to handle

- In addition to the equipment in a normal extension instrument, the operator's instrument contains separate operating devices for the external lines, a keyset for calling the extensions, and common operating devices.

The instrument can be placed on a desk. All signals are distinct and definite. Operation is simple. An extension is called by the pressing of one button only. (Per digit.)

Ordinary telephone instruments are used

- The instruments used as extensions are of the ordinary automatic Ericsson-type supplied to administrations all over the world.

Simple to extend and easy to check

- The relays are conveniently arranged in plug-in units. Thus an exchange not initially installed for full capacity can easily be extended by adding further relay sets. The sets are also easy to remove for inspection without interrupting the other functions of the plant. All relays carry twin-contacts. Connecting devices are carefully protected from dust.

No number changes

- The extension number once given to a person need never be altered. On removal to another room, the number can be connected to the new location by simple jumpering in the exchange. If additional traffic facilities are required, such as the right to make and receive external calls this, too, can be done without altering the number.

Special facilities

- The exchange can be furnished with a large number of special traffic facilities, the addition of which appreciably increase its scope. The more important of these facilities are:

- Automatic transfer of calls
- Special arrangements for conference calls
- Junction traffic with other branch exchanges
- Facilities for staff location
- Loud-speaker telephones

Further particulars of the construction and properties of these devices will be supplied on request.



TELEFONAKTIEBOLAGET

LM ERICSSON

Division Erga
Stockholm Sv