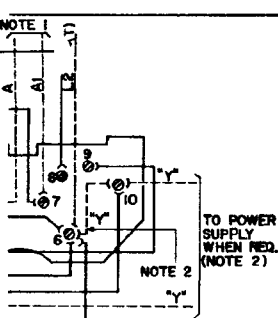
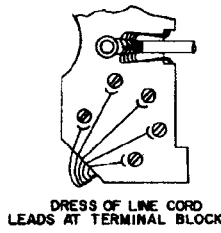
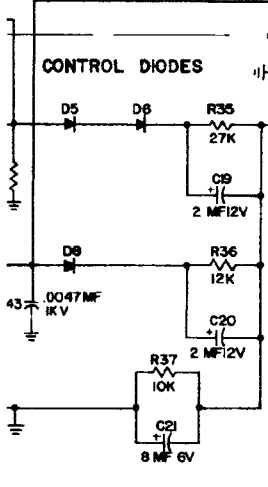
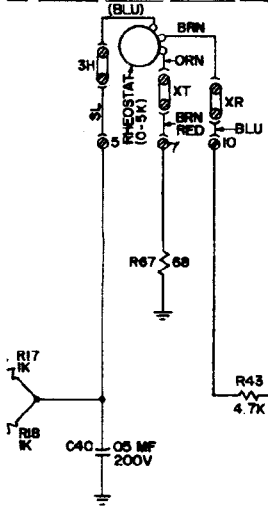
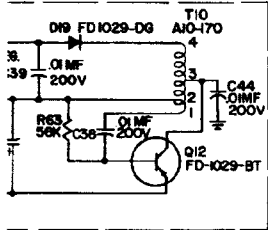


# MINAL BLOCK



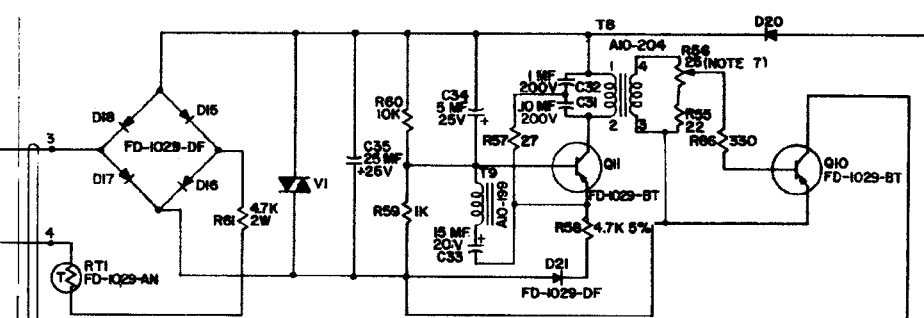
## PRINTED CIRCUIT BOARD



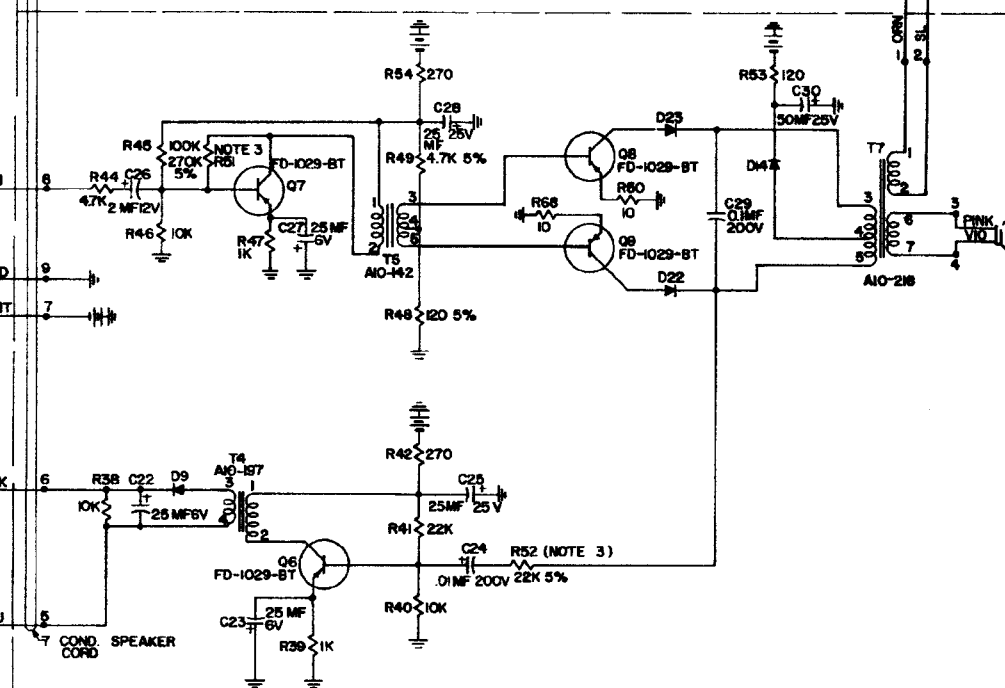
## NOTES:

- 1- TO BS-A ADAPTER FOR 10A KEY SYSTEM WHEN USED.
- 2- "Y" WIRING IS USED WITH POWER SUPPLY MOVE BLU LEAD FROM TERMINAL 6 TO TERMINAL 5 OF TERMINAL BLOCK.
- 3- THESE VALUES ARE NOMINAL AND MAY CHANGE DURING MANUFACTURE TO OBTAIN MOST SATISFACTORY OPERATION OF EQUIPMENT. THE VALUES SHOULD NOT BE CHANGED BY CUSTOMER.
- 4- PHONE IS WIRED FOR BRIDGED RINGING. FOR DIVIDED RINGING (-R) TO GRD MOVE YEL LEAD FROM TERMINAL 6 TO TERMINAL 4 OF TERMINAL BLOCK. (+T) TO GRD MOVE BRN-GRN LEAD FROM TERMINAL 1 TO TERMINAL 4 OF TERMINAL BLOCK. FOR RINGER WIRED SEPARATE MOVE BRN-GRN LEAD FROM TERMINAL 1 TO TERMINAL 3 AND MOVE YEL LEAD FROM TERMINAL 6 TO TERMINAL 4 OF TERMINAL BLOCK.
- 5- WHEN PHONE WITH SATT DIAL IS USED TAPE BLK DIAL WIRE AND MOVE RED DIAL WIRE FROM TERM. 2T TO TERM. EB OF TERMINAL STRIP. MOVE BRN-YEL LEAD FROM TERMINAL 8 TO TERMINAL 4 OF TERMINAL BLOCK.
- 6- COLOR CODE IN ( ) DESIGNATE LEADS CONNECTED TO FRONT TERMINALS OF TERMINAL STRIP.
- 7- VOLUME OF TONE SIGNAL IS ADJUSTABLE USING A SMALL SCREWDRIVER THROUGH HOLE IN BOTTOM OF SPEAKER HOUSING.
- 8- ALL DIODES ARE FD-1029-FB UNLESS OTHERWISE SPECIFIED.

## SIGNAL CIRCUIT BOARD OPTIONAL IN SPEAKER CASE



## SPEAKER AMPLIFIER CIRCUIT BOARD



Schematic and wiring diagram of the basic telephone components.