

STROMBERG-CARLSON

A DIVISION OF GENERAL DYNAMICS CORPORATION

FIELD HANDBOOK

1544 SERIES TELEPHONE

The 1544 telephone is identical to the 1543 instrument except that the ringer and coil-capacitor unit are omitted. The telephone is used primarily as an extension set, or as part of a two-piece unit comprised of a telephone and a desk set box.

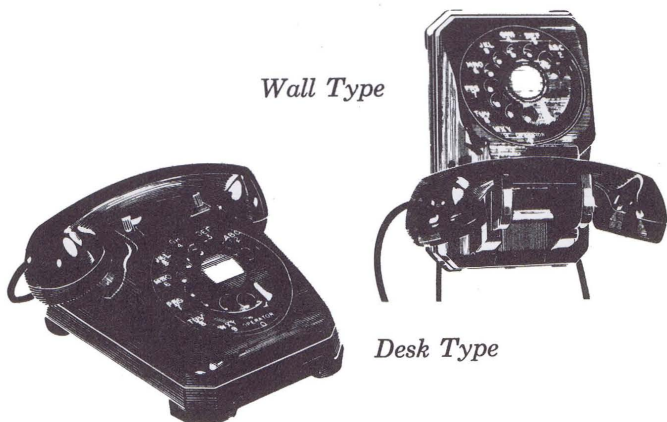


Figure 1. 1544 Telephone

1544 SERIES TELEPHONE

TABLE OF CONTENTS

	<i>Par. No.</i>	<i>Page No.</i>
Section I. DESCRIPTION AND USE		
Dial and Dial Blank Assembly	1	5
Handset Assembly	2	6
PBX Operators Telephone	3	8
Magneto Service	4	8
Section II. INSTALLATION		
Manual to Dial Conversion	5	9
Desk to Wall Conversion	6	11

1. DIAL AND DIAL BLANK ASSEMBLY.

The dial and dial blank assembly are interchangeable on all 1500 Series Telephones. The dial is equipped with an extended number plate on which the letters and digits (colored white) are located outside the periphery of the finger wheel. A dial mounting bracket attached to the dial is hooked onto the pivot shaft of the hookswitch mounting bracket and fastened by means of the two prongs of the dial mounting bracket that are inserted into the baseplate. A dust cover protects the working mechanism of the dial. The dial blank closes the opening reserved for the dial when the telephone is used at a manual station. The same station card fits both the blank and the dial.

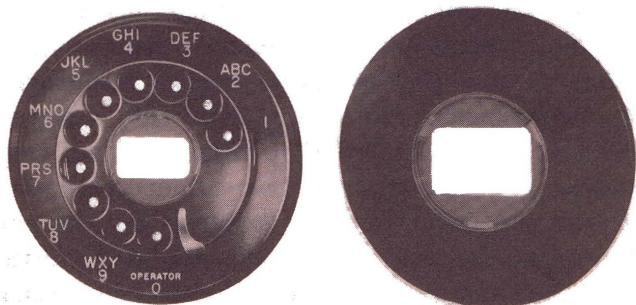


Figure 2. Dial and Dial Blank Assembly

2. HANDSET ASSEMBLY.

The handset assembly of the 1544 or any of the 1500 Series Telephones consists of the handset, transmitter and receiver elements, the transmitter and receiver caps, and handset cord. The handset is so designed that the transmitter is brought closer to the subscriber's lips; thus improving transmission. The transmitter element is of the carbon type and is nonpositional. Its connections are made through the metal spring contacts in the handset and secured by the transmitter cap. The receiver element is connected by two screws to the spade terminals of the wires running through the handle of the handset and is held in place by the receiver cap. The handset cord, either standard or retractile, is secured to the stay-post of the handset by a screw. The three wires of the cord are terminated with spade terminals and secured to their correct positions by screws.

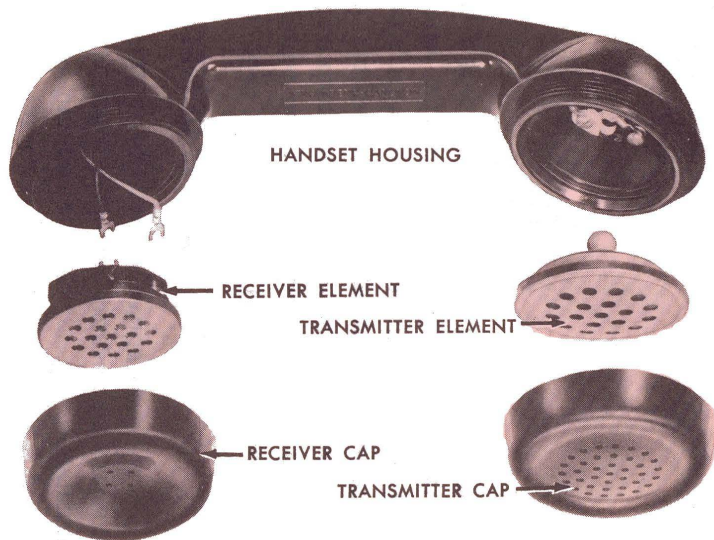


Figure 3. Handset Assembly

3. PBX OPERATORS TELEPHONE.

The 1544P, 1544C, and 1544K Telephones are used very successfully as PBX operators instruments. Special four conductor cords, with separate leads for dial impulse springs, or 514 conductor cords with separate leads for transmitter, receiver, and dial impulse springs are available.

4. MAGNETO SERVICE.

The 1544 and 1544B Telephones are used with magneto equipment. The 1544 Telephone is used with a magneto set box which contains an induction coil, ringer, and hand generator. The 1544B Telephone, which contains an induction coil, is provided for use with magneto desk boxes which contain a ringer and hand generator, but no induction coil.

5. MANUAL TO DIAL CONVERSION.

The conversion of the 1544 Series Telephone is accomplished in the following manner:

a. Remove the housing by loosening the lock screw in the rear clip of the housing and lifting up and forward.

b. Remove the dial bracket by disengaging the twin prongs of bracket from the baseplate and by lifting the assembly up and back.

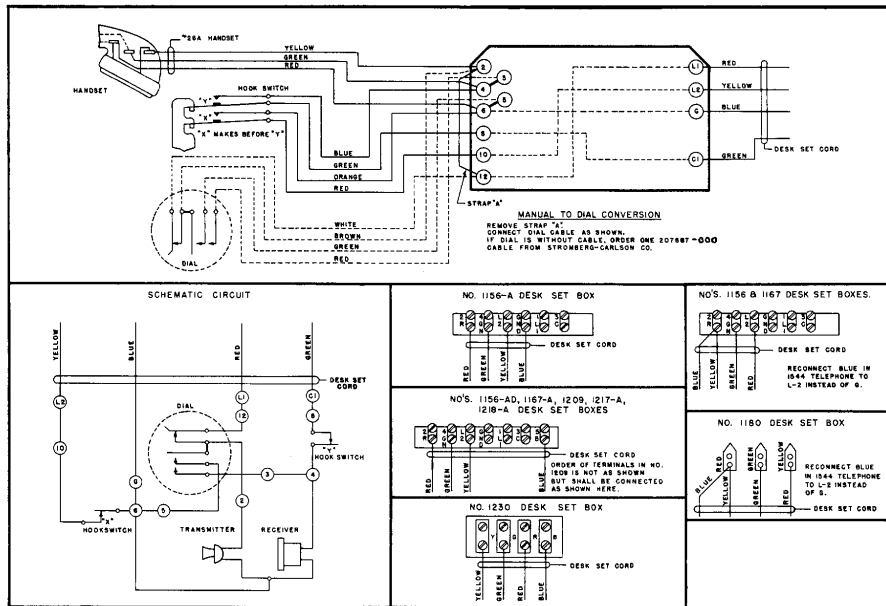
c. Remove the dial blank cover from the bracket by removing the self tapping screws.

d. Place the dial bracket, with the prongs downward on the back of the dial (being sure to line the holes up). Place a No. 203052-000 cable clamp on one mounting screw and insert it into the right mounting hole. The second screw is then inserted into the other mounting hole, securing the bracket to the dial assembly.

e. Remove the A strap and attach the cable 207687-000 lead as follows:

(1) White lead, one end to terminal W on the dial, other end to terminal 12 of the coil capacitor assembly.

(2) Brown lead, one end to terminal B on the dial, other end to terminal 2 of the coil capacitor assembly.



TCI Library: www.telephonecollectors.info
Figure 4. Wiring Diagram—1544 Telephone

(3) Green lead, one end to terminal GN on the dial, other end to terminal 5 of the coil capacitor assembly.

(4) Red lead, one end to terminal R, on the dial, other end to terminal 3 of the coil capacitor assembly.

6. DESK TO WALL CONVERSION.

Desk to wall conversion of the 1544 Series Telephone is accomplished in the following manner, using the No. 211445-000 conversion kit.

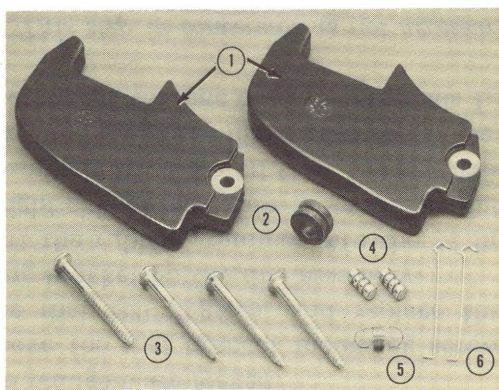


Figure 5. Conversion Kit, Wall Mounting

LEGEND FOR FIGURE 5

No.	Part Name	No.	Part Name
1	Wall Type Plungers	4	Locking Pins
2	Rubber Grommet	5	Tension Spring
3	Mounting Screws	6	Retaining Springs

- a.** Remove the housing by loosening front and rear housing screws, and by lifting the housing up.
- b.** To remove the plunger, depress the retaining spring and push out the pin. Position the wall type plunger, aligning the holes with the holes in the lever. Depress the retaining springs and insert the locking pin. Release the spring and check to see that the plungers are locked.
- c.** Remove the dial bracket mounting screws, rotate the dial 180 degrees, and replace the dial mounting bracket on the dial assembly.
- d.** Insert the rubber grommet into the $\frac{3}{8}$ in. hole in the right side of baseplate. Remove the line cord from terminals L1, L2, and G of the coil capacitor assembly, and insert the line cord through the $\frac{3}{8}$ in. hole. Reconnect the line cord to terminals L1, L2, and G.

Note. This step in conversion is not necessary, but makes for a neater installation.

- e.** Secure the baseplate to the wall with the four wood screws provided.
- f.** Replace the housing and tighten the locking screws.