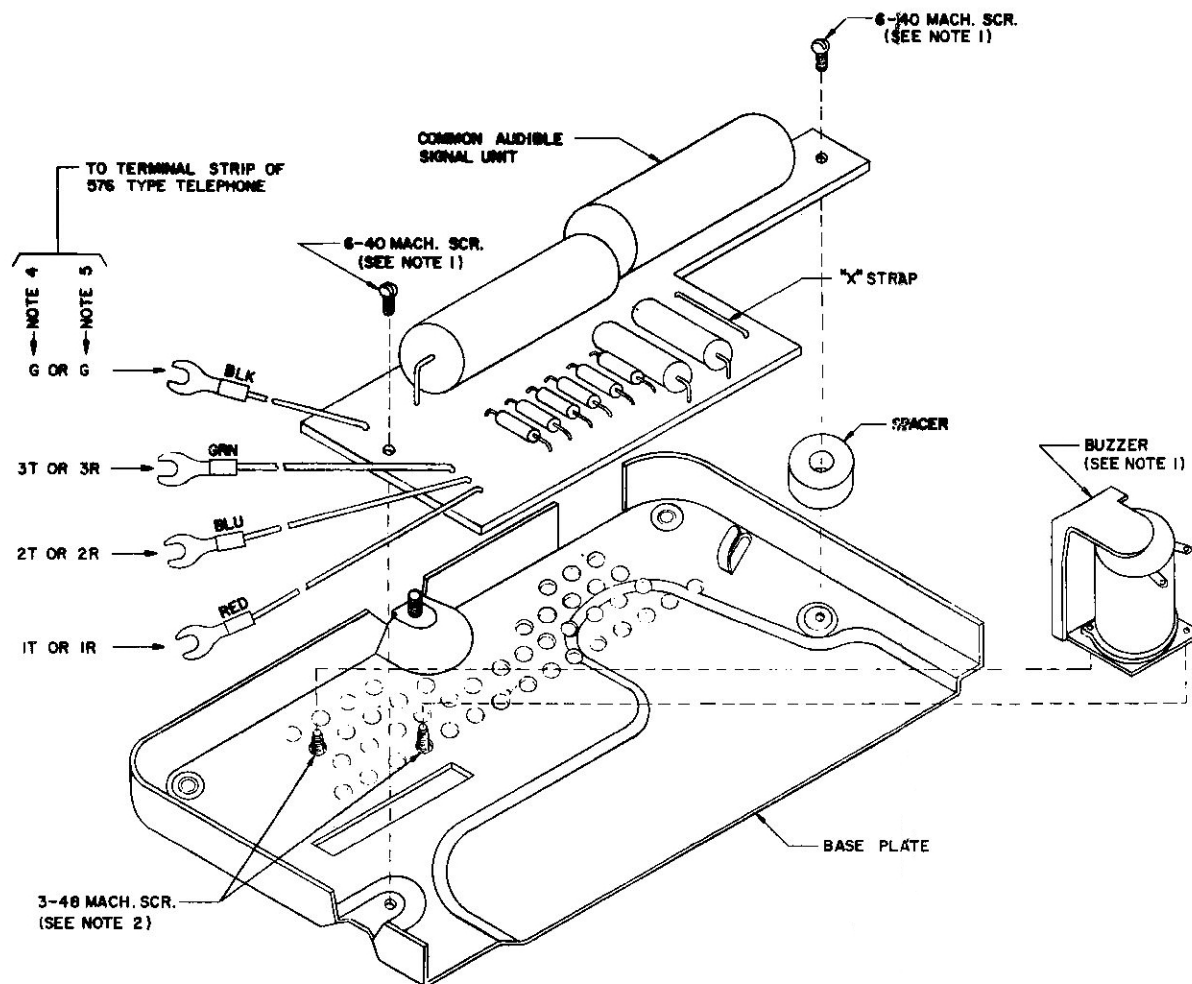


# INSTRUCTION SHEET FOR COMMON AUDIBLE SIGNAL UNIT

## NOTES

1. ATTACH COMMON AUDIBLE SIGNAL UNIT TO TELEPHONE BASE USING TWO 6-40 MACHINE SCREWS AND PHENOLIC SPACER FURNISHED.
2. MOUNT BUZZER ON BASE PLATE IN POSITION SHOWN USING TWO 3-48 SCREWS AND LOCKWASHERS.
3. CONNECT RED, BLUE, GREEN, AND BLACK SPADED LEADS TO TERMINALS ON TELEPHONE TERMINAL STRIP AS INDICATED ON DIAGRAM.
4. FOR CENTRAL OFFICE GROUND CONNECTED GENERATOR, CONNECT THE RED, BLUE, AND GREEN LEADS TO POSITIVE (T) SIDE OF LINE. THE BLACK LEAD MUST BE CONNECTED TO A SUITABLE GROUND FOR OPERATION.
5. FOR CENTRAL OFFICE BATTERY CONNECTED GENERATOR, CUT "X" STRAP AND CONNECT THE RED, BLUE, AND GREEN LEADS TO NEGATIVE (R) SIDE OF LINE. THE BLACK LEAD MUST BE CONNECTED TO A SUITABLE GROUND FOR OPERATION.



## RINGING GENERATOR OUTPUT (MINIMUM)

### BATTERY CONNECTED GENERATOR

LINE LOOP (OHMS)	NUMBER OF UNITS		
	1	2	3
0	95V	100V	115V
600	105V	110V	120V
1000	110V	115V	125V
1200	112V	118V	128V

### GROUND CONNECTED GENERATOR

LINE LOOP (OHMS)	NUMBER OF UNITS		
	1	2	3
0	75V	75V	75V
600	77V	80V	82V
1000	77V	81V	83V
1200	78V	82V	90V